

Mississippi Valley
CONSERVANCY

Saving the Driftless . . .



. . . for them

2022 Annual Report



...and for them

CONTENTS

Executive Director's Letter	3
New Lands Protected	4
Restoration for Climate Resilience	8
More Fun Outdoors	10
Our Conservation Commitments	12
2022 Financial Summary	14
Partner Project Expands Greenway	16
Member Spotlight	17
2022 Supporters	18
Conservation Partners	23

FRONT COVER: The joy of making fresh apple cider on conserved land in Vernon County. Photo by Sarah Woolworth.

INSIDE COVER: Photos of red fox, great egret, and Blanding's turtle by Allen Blake Sheldon. Photo of monarch butterfly by Bill Peterson. Photo of monkshood flowers by Conservancy staff.



Starting small and dreaming big

Cinnamon, vanilla, butter, and sugar. These are the smells wafting from my kitchen this time of year. The temperature outside is chilly, and big, fat, lazy snowflakes fall outside the kitchen window. Inside the air is warm and smells sweet and doughy.

**A message from
Carol Abrahamzon,
Executive Director**

There was a time when my three kids would be lined up at the kitchen counter, a bowl of sugar in front of each of them. I formed the molasses balls and they rolled them in sugar to bake up sweet and crackly. Those three have been replaced by five grandchildren – and the tradition continues.

As I drop the cookie balls into their bowls we talk about our favorite hikes, the fun we had finding special rocks and baby toads, and the sledding we'll do in the afternoon.

These five kiddos remind me why we have been working so hard to save the Driftless . . . *for them.*

We closed out 2022 with a bang – surpassing our goal of protecting 25,000 acres before the end of our 25th anniversary year. How was this possible? It was possible because of you. Your hours spent volunteering, your notes filled with encouraging words, and your donations to save land and restore the health of forests and prairies for clean water, native wildlife, and everyone who lives here.

2022 started with our largest acquisition, a 1,600-acre farm with important forest and water resources along the Kickapoo River, and it ended with our largest conservation easement, a nearly one 1,000-acre farm with flood-preventing wetlands and diverse wildlife habitats.

As I look at the five little faces in front of me I'm filled with hope and joy, just as I am when I think about the next year, and the next 25 years of *Saving the Driftless . . . for them.*

We have much to celebrate, and yet we have much to do. We started small, but with your continued support we're dreaming big. Thank you!

Together in conservation,



Carol Abrahamzon



A land legacy in Richland County

by Drake Hokanson

On a recent tour of her Fancy Creek Llama Farm via her utility terrain vehicle, Marilyn Houck explained the features of this special land and the efforts of generations to conserve it. Accompanied by me and five dogs that came along for the ride, Marilyn pointed out the woodlands, clear springs, prairie plantings, and Fancy Creek, all of which make up her 993-acre farm north of Richland Center, Wisconsin.

“Both Kent, my late husband, and I agreed: we did not want to see this property developed into acres of housing. I am sure he would be pleased with our agreement with Mississippi Valley Conservancy to conserve the land.”

“I’m encouraging my neighbors to do the same thing,” says Marilyn about her conservation easement.

The property is a land mass of three connecting farms where Marilyn and Kent shared a happy married life in the homestead. Marilyn chose to honor Kent, his grandparents, and his parents with conservation of the land for the future.

Of particular interest to Marilyn has always been what to do about Fancy Creek, nearly a mile of which runs through her farm. Like many streams in the area, it was straightened in the 1940s to better drain the land for agricultural use. The result is a ditch that directs water and sediment downstream like a fire hose, increasing the likelihood of flooding downstream, including on the Pine River through Richland Center. The original streambed is still intact, and the associated floodplain and wetlands still support considerable native vegetation such as sedges and many other wetland plants.

In the hope of seeing the creek restored, Marilyn put in a call to the Wisconsin Wetlands Association, which quickly saw the potential for a watershed-sized restoration that would not only bring back the diversity of the creek and the floodplain function, but also retard water flow to better protect downstream properties and municipalities.

The partnership soon grew to include the Wisconsin Department of Transportation, Southwest Wisconsin Regional Planning Commission, multiple local and state agencies, university groups, and most important, neighbors, who want to join the effort to restore the creek. With the easement held by Mississippi Valley Conservancy, Marilyn’s part of a restored Fancy Creek will be protected in perpetuity.

Enjoy the unabridged versions of our land protection stories in the Wild Reads section of our website.





“Through the years, we have all used good conservation practices to keep the land stable, including no-till planting and contour farming,” said Marilyn. “Areas of highly erodible soils have been planted with native prairie plants specifically selected to support pollinators and prevent run-off into the creek, and to help keep the farm’s forest land growing and productive. It has been in the Managed Forest Program for over 35 years, with the membership in the program having been renewed in 2021 for another 50 years.”

Above: The Houck farm is comprised of working croplands, oak woodlands, pollinator plantings, wetlands, cliffs, and sedge meadow. *Photo by Abbie Church*

Left: Marilyn is accompanied by loyal friends when out on her land and caring for the llamas. *Photo by Drake Hokanson*

MORE LANDS PROTECTED

66

acres

If you've ever enjoyed the scenic drive from Sparta to Black River Falls, you've probably admired the beauty of the forests along the way. A stretch of that landscape is now conserved forever. After decades of tree farming and conservation forestry on the property, Jack Halbrehder and wife Carolyn have permanently protected their land through a conservation agreement. When they purchased the land in 1988, there were agricultural fields along the valley bottom, and some were highly eroded. They decided to convert them to tree plantings to conserve the soil and generate income with a Christmas tree farm. With the help of a neighbor and his tractor, they planted 1,000 trees in the first year and hundreds more in each of the following years. The property includes seeps and springs that are part of the Big Creek watershed.



Photo by Tom Rhorer

78

acres

When Mary Helgren and Rich Radek acquired their Crawford County property in 2002, they had no shortage of excitement and ideas about caring for their land. Since then, they have gained much practical wisdom from the conservation community and from the land itself. Much of the land was previously used to produce crops in contoured fields. Through rotational prescribed burns and inter-seeding of diverse seed mixes, Mary and Rich have been restoring those fields to grassland. A recent discovery deepened their already strong commitment to land conservation. While mowing brush, Rich found new sinkholes that most likely were created during the heavy rains of 2014 and 2015. Mary and Rich have worked to ensure that a buffer of perennial vegetation remains intact around the sinkholes to protect groundwater from contaminants. The property's role in protecting water, wildlife, and climate is a benefit to all.

MISSISSIPPI VALLEY CONSERVANCY



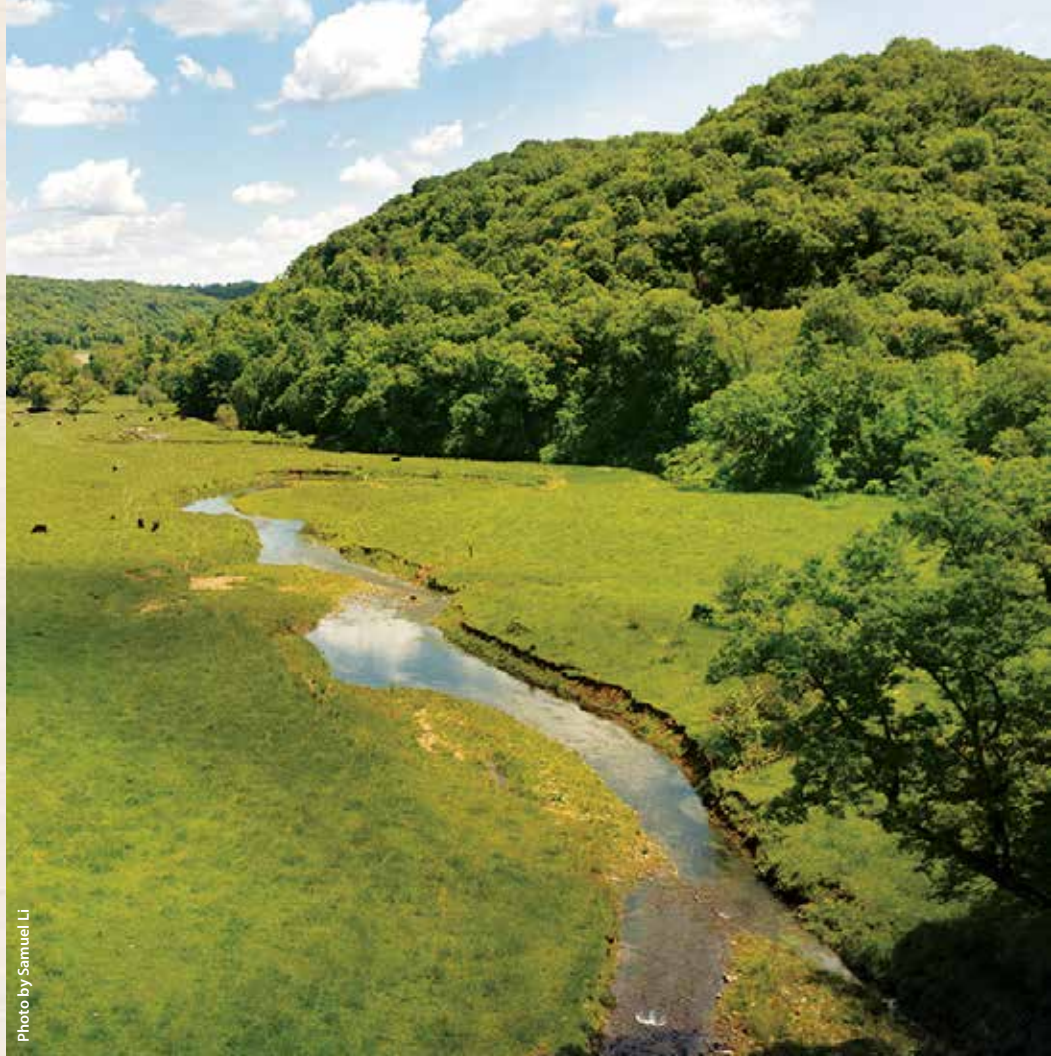
Photo by Tom Rhorer

1,600
a c r e s

This land acquisition was made possible by a generous couple who

are passionate about land and water conservation in this part of Wisconsin. Plum Creek Conservation Area is now the largest property the Conservancy owns. Thanks to the generous donors and our diligent partners, the land will be protected and restored to provide natural services such as flood protection, public recreation opportunities for outdoor enthusiasts, and an expanded area of connected lands that provide refuge for wildlife whose native habitats are threatened by climate change and development. The property is next to the DNR's 1,927-acre Kickapoo Wildlife Area-Wauzeka Unit, a 635-acre State Natural Area. These protected areas support one of the highest concentrations of rare forest-interior breeding birds in southern Wisconsin.

Photo by Samuel Li



261
a c r e s

Karen Hanson has lived on the Hanson family farm since marrying Bud Hanson

in 1981. Bud's father was born on the farm in the 1890s, and he and Bud farmed and cared for the land. Today, six years since Bud's passing, Karen manages the farm while working to accomplish the rest of the plans she and Bud developed for its conservation. Part of that plan was accomplished on February 15, 2022, when Karen entered into a conservation agreement with the Conservancy. The property includes organic pastures and fields with rich, productive soils for farming and habitat for wildlife. It is also rich in water resources. The Hanson conservation agreement permanently prohibits subdivision and residential development of the land, ensuring its ability to protect farming, wildlife, water, and climate into the future.

Photo by Sandra McAnany



Restoration for climate resilience at Tunnelville Cliffs

By Levi Plath



Whip-poor-will. Photo by A.B. Sheldon



Halloween pennant dragonfly on purple prairie clover.

As we witness species decline and anticipate human population shift in this time of climate change, conserving precious habitats for the sake of wildlife, water, and recreation is more valuable than ever. Thankfully, many landowners partner with the Conservancy to protect their land from future development. There are also times when land acquisition is the only alternative. In the case of the Tunnelville Cliffs nature preserve, we were especially fortunate to acquire most of the land through a generous donation.

The 1,270-acre preserve is comprised of a variety of habitats including woodlands, savannas, prairies, grasslands, and wetlands as well as a portion of the Kickapoo River – each supporting diverse plant and wildlife communities. The sky above this nature preserve is also exceptionally dark, making it a desirable place for creatures of the night, such as bats, owls, and migrating birds.

Land acquisition is only the first step

Acquisition of this large property in the ancient Kickapoo River Valley was only the first step in its conservation. Since 2009, the Conservancy has opened the Tunnelville Cliffs nature preserve for public recreation and has worked to enhance and restore the land for ecological diversity with special consideration for rare and declining habitats and species. Restoration of prairie, oak woodland, and savanna through brush clearing, invasive species control, forest stand improvement, and prescribed burning has been conducted over the years. All of these practices support biodiversity while increasing the land's resilience to abnormal weather events, its ability to help prevent flooding by retaining water, and its ability to store carbon.

Habitat restoration and maintenance can be a slow process when managing large acreages, so our initial restoration efforts focused on the rarest habitats – the dry prairie and oak savanna. As restoration of the prairies and savannas progressed, we have slowly expanded the prairies by increasing our use of managed fire to enhance their growth.

Tunnelville Cliffs is a 1,270-acre nature preserve in Vernon County, just outside of La Farge. It is owned and managed by the Conservancy. The preserve was acquired in two transactions. The first 150 acres were purchased in 2005 and designated as a State Natural Area by the Wisconsin Department of Natural Resources in 2006. In 2009, a generous family who owned adjacent land donated an adjoining 1,118 acres creating the preserve that we know today as Tunnelville Cliffs.

In addition to generous member and volunteer support, funding for the restoration work has been provided by the WDNR Wild Turkey Stamp Program, Wisconsin Habitat Partnership Fund, NRCS Environmental Quality Incentives Program (EQIP) and WDNR Landowner Incentive Program (LIP).

In just the last year, restoration activities on the preserve have included approximately 6 acres of brush removal, 15 acres of invasive species control, 10 acres of forest stand improvement, and 235 acres of prescribed burning. These efforts were largely completed by Conservancy staff and interns throughout the year. The additional help of nearly 30 volunteers contributed to seed collection, prescribed burning, brush removal and invasive species control.

Caring for the wild requires ongoing care of the land

Our restoration efforts have come a long way in the last 17 years and have been guided by our land management plan for the property as well as a number of forest inventories and academic research projects over the years, yet there is no end in sight for our management of the preserve. Wild lands and habitats require ongoing maintenance and restoration if they are to exist for the next generation. Some areas of the preserve will see increased use of prescribed fire in the coming years to limit the growth of woody plants while other areas may require planting trees to promote habitat for a specific rare or declining species.

Since acquiring this property, the Conservancy has added land management staff and our crew is continuing to expand with our increased acreage throughout our service area, but we will always rely on the additional help of volunteers throughout the year on all of our preserves. If you're interested in helping us to restore the native habitats at Tunnelville Cliffs or at any of our other nature preserves throughout our 9-county service area, please visit our website and sign up as a volunteer!



Eastern meadowlark. Photo by A.B. Sheldon



Grey-headed coneflower.



Acadian flycatcher. Photo by Gwyn Calvetti

Tunnelville Cliffs is home to increasingly rare species and natural communities like eastern meadowlark, boblink, acadian flycatcher, purple prairie clover, grey-headed coneflower, whip poor will, and adam and eve orchid among others.



What's your link to the land?

Come outdoors with family and friends to learn from local experts who will share their knowledge and love for the land.



Want to get outdoors and surround yourself with nature? *Linked to the Land* was created so that everyone can discover more about the beauty that surrounds us. You'll get to know more about the nature preserves you've protected and the many native habitats and wildlife species that make our part of Wisconsin unique. Once you get to know the nature preserves, we think you'll enjoy them more and feel confident about going back on your own and introducing them to friends.

The hikes and workshops are all free for anyone to join, and most of them require only average physical agility and no special gear.

Each activity is hosted by Conservancy staff and guided by natural science experts from our area. We typically have several guides on each hike, so all participants have a chance to ask questions and learn more.

This year's *Linked to the Land* activities are sponsored by Olson Solar Energy. We're grateful for their support and excited about the rapidly expanding use of renewable energy that helps protect our land, water, and wildlife. Thanks also go to our media partner for this program, WXOW/News 19.

MORE FUN OUTDOORS • MORE FUN OUTDOORS • MORE FUN OUTDOORS • MORE FUN OUTDOORS • MORE FUN OUTDOORS



REMINDER: Hiking on muddy trails causes real damage to water and wildlife. If you can see your tracks, turn back.

HAPPY HIKING!

The 2023 Challenge starts on April 30!

Challenge yourself and enjoy the beauty of the trails at our most accessible nature preserves.

Details at: www.mississippivalleyconservancy.org/ttc

Hike with family and friends, or go solo, in the 2023 Trail Trek Challenge – it's the free hiking program you can do throughout the year when the timing it works for you. The downloadable trail guide and maps are free, too. And there's a nature hunt for every trail to help keep youngsters engaged.

It all starts at Earth Fair in La Crosse on April 30, 2023.

We'll celebrate those who completed last year's challenge (continuing through 4/4/2023), and we'll warm up for a new year of hiking with a guided walk around the La Crosse River Marsh.



2023 SCHEDULE OF FREE WALKS AND WORKSHOPS

Details and registration* are updated throughout the year on our website. Sign up for our free e-newsletter (see bottom of website home page) or follow us on Facebook for updates and reminders about upcoming activities.

Feb 11	VALENTINE'S SNOWSHOE HIKE	La Crosse River Conservancy
April 8	FOCUS ON THE FLYWAY	Shady Maple Overlook
May 13	WORLD MIGRATORY BIRD DAY WALK	Sugar Creek Bluff
June 10	WILDFLOWER WONDERS WALK	Borah Creek
July 22	BAT CAVE ECOLOGY TOURS	Kickapoo Caverns
Aug 19	PRAIRIE POLLINATORS WALK	Mathy Bluff Prairie
Sept 9	MUSHROOM FORAY	Cassville Bluffs
Oct 7	PRAIRIE STARGAZING WALK	Tunnelville Cliffs

*Details are subject to change and advance registration is required for all activities.



MORE FUN OUTDOORS • MORE FUN OUTDOORS • MORE FUN OUTDOORS • MORE FUN OUTDOORS • MORE FUN

Become a citizen scientist!

Join us and our community conservation partners to discover and catalog the plants and animals that live here. Details at: www.strive2thrivecr.org/DABB



EARTH FAIR! – Sunday, April 30

INSECTS 12:20–12:40pm, Myrick Park Center, Marshview Room

INSECTS 1:20pm & 2:45pm, Myrick Park Center, La Crosse Room

MIGRATORY BIRD CELEBRATION – Saturday, May 6

9:00am–12:00pm, Myrick Park, Myrick Park Center, and La Crosse Marsh Trail

NATURALLY SPRING–SPRING EPHEMERALS – Saturday, May 13

1:00–3:00pm, Villa St. Joseph–Franciscan Sisters

BUGS IN THE GARDEN/INSECTS – Saturday, July 15

10:00am–12:00pm, Myrick Park, WisCorps Garden

NOCTURNAL INSECTS – Saturday, July 22

7:30pm–9:30pm, Villa St. Joseph–Franciscan Sisters

NATIVE PLANTS & INSECTS – Saturday, August 5

10:00am–12:00pm, Myrick Park, Native Gardens

INSECTS – Saturday, September 9

10:00am–12:00pm, Myrick Park Center, Karen's Classroom and Native Gardens

FUNGI – Saturday, September 9

2:00–4:00pm, Lower Hixon Trail

A collaboration of Strive 2 Thrive Coulee Region, Mississippi Valley Conservancy, WisCorps, the UW-La Crosse Biology department, Viterbo University Biology department, and La Crosse City Parks, Recreation and Forestry Department, La Crosse Public Library, ORA Trails, Sustainability Institute, and the following Neighborhood Associations: Downtown, Holy Trinity–Longfellow, Logan Northside and Powell–Poage–Hamilton.

Upholding our conservation commitments



Annual Easement Monitoring

With the acceptance of every conservation easement, it is the Conservancy's responsibility to ensure that the working farmland, wildlife habitat, and other natural resources remain protected. To fulfill this stewardship role, we conduct annual property visits to talk with landowners and hike their property to discuss any recent or planned changes. This monitoring process of more than 120 properties is conducted by staff and board members. *Above: Land manager Levi Plath discusses habitat management with landowner Will Agger.*



Supporting Changes of Ownership

The protection of a conservation easement stays with the land, even through changes of ownership. That's because the easement is permanently tied to the title on the property. This makes it essential for Conservancy staff to help prospective buyers and new owners understand what it means to have a conservation easement, how it protects their land, and how the Conservancy can support them as owners of protected land. *Left: Erin Donlin and Bob Tenwinkel with their sons, Andrew and Matthew, at their blufftop property in the Town of Onalaska. The land was protected with a conservation easement prior to their purchase.*



Establishing a conservation easement is a complex process, and in permanent land protection, ongoing support, we have to protect the land as promised. We prioritize service for landowners before taking on new projects, and we take as many staff resources as we can, but they are all equal.



Land Management Changes

Landowners often continue to improve and restore the lands they protect with us well after their conservation easement is signed. While conservation easements are perpetual, it is expected that there will be changes in how land is managed. Conservancy staff review proposed changes to land management practices to ensure these practices meet the terms of the conservation easement and protect conservation values. Examples of plans we review include habitat management plans, streambank restoration plans, farmland conservation plans, trail construction plans, and more. *Left: David Van Dyke inspecting his prairie strips. He manages his land according to a forestry stewardship plan and a habitat management plan.*

vation easement is a
it's only the first step
ection. Thanks to your
re expanded our staff to
ed. Throughout the year,
r existing landowners
jects. These activities can
urces as new projects,
ually important.



Connecting Landowners to Resources

Continuing to care for the land requires dedication, time, and funding. The Conservancy supports landowners' efforts to implement conservation practices by connecting them to experts and cost-sharing or grant opportunities. For example, we might connect a landowner interested in prairie restoration to their local Pheasants Forever Farm Bill Biologist for a restoration plan and to funding programs like EQIP and CRP. We also share our intern crew with landowners on a first come, first-served basis. *Above: Conservation associate Krysten Zummo visits with Mary Helgren and Rich Radek as they prepare to close on their conservation easement.*



Quality Assurance

The accreditation seal lets the public know that Mississippi Valley Conservancy has undergone an extensive external review of the governance and management of its organization and the systems and policies we use to protect land. We first became accredited in 2012, and accreditation is reviewed every five years.

Thanks to the many volunteers who helped throughout the year!

Talented volunteers of all kinds help us throughout the year with habitat restoration, guiding hikes, mailings, data entry, events, photography, videography, graphic design, writing, proofreading, board and committee duties, easement monitoring, auctioneering, music, cooking, and more. Some of them are pictured below, including some volunteer board members. Let us know if you'd like to get involved and earn a free membership!



2022 FINANCIAL SUMMARY

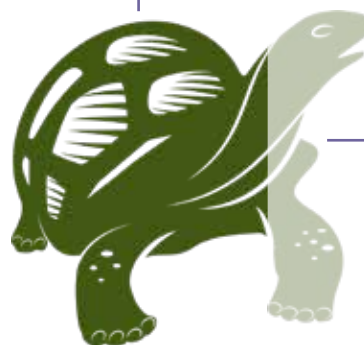
Every protected property requires an investment of scientific, legal, and administrative resources to assess, document, and monitor the health of the land. Fundraising and education efforts require time and resources to create awareness among landowners and engage communities with our mission.

Your support makes it all possible.

Mississippi Valley Conservancy is committed to strong fiscal health. The financial summary at right is based on the complete financial audit that was conducted by Wegner CPAs. Their full report is available on our website or by contacting us at 608-784-3606 ext.1.

Expense Allocation

83% Programs



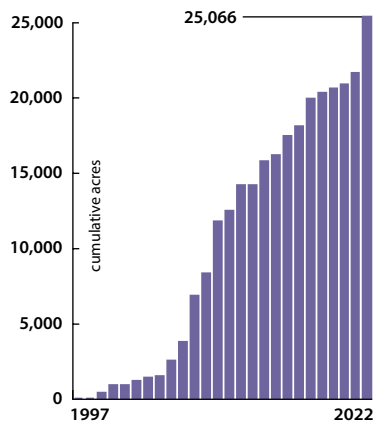
— 17%
Core
Mission
Support

In 2022, volunteers helped us accomplish the following habitat restoration work:

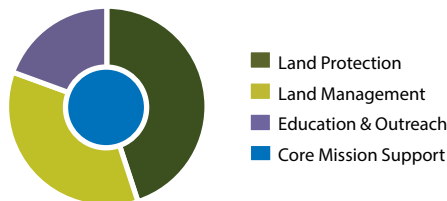
- Controlled burning: 414 acres of fire-dependent habitats
- Forest stand improvement: 25 acres to promote oak regeneration
- Cedar clearing: 2 acres for native prairie restoration
- Invasive brush removal: 18 acres
- Invasive weed control: 150 acres including pulling over 1,200 lbs of garlic mustard and wild parsnip
- Collected 30 lbs of prairie seeds
- Repaired 1,900 feet of fencing



Land protected since 1997
25,066 acres and growing!

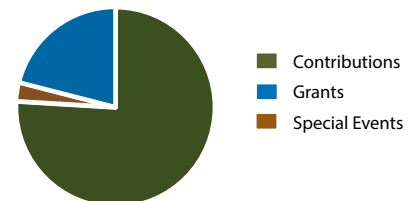


FY 2021–22 Expense Allocation
Total Expenses \$904,918



Land Protection	\$ 335,478
Land Management	265,811
Core Mission Support	158,687
Outreach & Education	144,942
Total Expenses	\$ 904,918

FY 2021–22 Fundraising Revenue
Total Revenue \$1,211,966



Contributions	\$ 1,073,542
Grants	297,068
Special Events	42,870
Investment Income	(201,514)
Total Revenue	\$ 1,211,966



Partner project expands Onalaska Greenway

Story by Dave Skoloda

The City of Onalaska took another big step in expanding its Onalaska Greenway as Mississippi Valley Conservancy transferred ownership to the City of 51 acres of woods and prairie known as Savanna Oaks.

The property was acquired by the Conservancy in 2009 as part of the Onalaska Natural Lands Protection Program – a program that enabled the Conservancy to negotiate, arrange funding, acquire, and place permanent protection on properties prior to turning them over to the City. The greenway is the network of trails and natural lands the City is protecting and connecting to enhance the recreational and environmental benefits for its residents and visitors.

The land is managed as natural habitat and is part of the larger city Greenway Project with a connection to the Greens Coulee Park. Hiking and other nonmotorized uses such as hiking, cross-country skiing, snowshoeing, and bird-watching are encouraged. The City continues to work with the Conservancy to add more land to the greenway as it becomes available. Completion of the plan will likely take many years. Learn more in the *Wild Reads* section of our website at www.mississippivalleyconservancy.org.



“This is really significant,” said Onalaska Mayor Kim Smith, who grew up exploring Onalaska’s blufflands. “The reason people love to be here is the beauty of the blufflands. This partnership protects that for future generations.”

Shown above from left to right: MVC Conservation Director Abbie Church, Onalaska Mayor Kim Smith, MVC Executive Director Carol Abrahamson.

MEMBER SPOTLIGHT

Sharing her love of the land



Kathryn Hietbrink inspires us in many ways, as she just keeps showing up and sharing her love of the land. In this photo she's wearing MVC safety gear and helping out on a volunteer day at Sugar Creek Bluff in February 2022.

You may know Kathryn Hietbrink from her role as a school counselor at La Crosse Central High School, where she assisted those students who most needed help. She was well qualified for the job after having spent several years helping at-risk youth develop basic problem-solving skills in the wilderness. Her senior thesis at Kalamazoo College was about utilizing Outward Bound to redirect incarcerated youth.

Recently retired, Kathryn now contributes her outdoor skills to caring for nature in Wisconsin's Driftless Area and for her own well-being. As a certified Wisconsin Master Naturalist, she dedicates a generous amount of time and energy each year to local conservation groups, and Mississippi Valley Conservancy is among them.

In addition to participating in our *For the Wild* volunteer program, she's a site steward for *two* of our nature preserves – La Crosse River Conservancy and Trempealeau Lakes. She has even come into the office to help with mailings, but she prefers being out in the wild. "It feels so enlivening to be outdoors!" she said. "You don't have to have a lot of skill to get out there because you learn by doing, and you're working in teams where you are helping each other. To be a site steward, Levi and Genesis will help as much as you need as well by walking the land with you, sharing its history and plans for its future."

When she's not helping out with habitat restoration, she enjoys hiking and birding with an eye on all that goes on along the La Crosse River, which she can see from her home. Thanks for all you do, Kathryn!

Save the Driftless for *them* . . . by giving through your IRA

"Them" includes wildlife – the birds, bees, frogs, turtles, fish, bats, bobcats, and butterflies that depend on undeveloped land with native habitats to do their jobs in our shared ecosystem. "Them" includes the trees, grasses, sedges, and wildflowers that depend on undeveloped land where they can filter the water, feed the wildlife, and store carbon underground. And "them" includes the next generation of people, who also need forests, prairies, wetlands, streams, and farmlands to nourish their bodies, lift their spirits, and love the natural world.

Charitable gifts from your IRA are a great way to share your love of the land with "them."

For those 70½ years old+

You can give any amount (up to a maximum of \$100,000) per year from your IRA directly to a qualified charity such as Mississippi Valley Conservancy without having to pay income taxes. This popular gift option is commonly referred to as an IRA charitable rollover, also known as a qualified charitable distribution. The gift can satisfy required minimum distributions.

For those 59½ years old

If you are at least 59½ years old, you can take a distribution from your IRA and donate it to the Conservancy without penalty. If you itemize your deductions, you can take a charitable deduction for the amount of your gift.

At any age

No matter your age, you can designate Mississippi Valley Conservancy as the beneficiary of all or a part of your IRA and it will be gifted tax-free after your lifetime. It's simple – just contact your IRA administrator to request a change-of-beneficiary.

Thanks to *YOU*, amazing things are happening.

MEMBERS OF 2022

217 on Main AirBnB	Terry Benson	Michael and Marge Buncak	Thomas and Kimberley Culp
Brian and Joyce Abernathy	Brian and Barb Benson	David Burbach	Dawn Culver
Chris and Deborah Abrahamson	Sara Bentley	Dave and Jean Burgess	Jennifer Custard
Karen Acker	Cindy and Bill Berg	Nancy Burgett	Joyce P Czajkowski
John and Maureen Adams	Sister Sharon Berger	Thomas and Mary Burns	Nadia Czajkowski-Schepp
Dennis and Leslie Adams	Robin Bernacchi	James and Mary Busch	Richard and Shirley Dahlby
William and Peg Agger	Juliana Besenbruch	Thomas Byerly	Dairyland Power Cooperative
Therese Ahlers	Mary Lou Biddlestone	Loren and Margaret Cade	Tim Dakin
Rick and Barb Albrechtson	Eunice Bielefeldt	Kristi* and Frank Cadwell	Barb and Joe Dalton
Greg and Molly Aleckson	Big River Magazine	Stephen and Joy Cadwell	Dancing Waters
Michael Aleckson	Gary and Susan E Biron	Pat Caffrey and Peg Zappen	Steven Davis
Altra Federal Credit Union	Jill Blackbourn	Duncan J. Cameron	Davy Engineering Co.
Ronald and Therese Amel	David Blackey	Roy Campbell and Ellen Ullsvik	Peter Day
James and Debra Ames	William and Judith Blank	Patricia Campbell	Jane Debroux
Patricia Amsrud	Ed F. Block	Don and Louise Campbell	Sharon DeCicco
David and Janine Andersen	David and Dorothy Block	Elizabeth Campbell	Samuel Deetz
Raymond and Jodi Andersen	Hendrik and Karla Bloem	Charles and Diane Canniff	Daniel Deetz and
Shirley Anderson	Veronica Blount	Carol Cantwell	Rebecca Haack-Deetz
Joyce Arthur	Boats and Bluegrass	Forrest and Leigh Carlson	David and Julie DeHart
Connie Arzigian	John C. Bock Foundation	Kathleen Carlyle	Gerald and Ellen DeMers
Associated Bank N.A.	Beverly Bodine	Robert Carney	Phil and Sharon DeRosa
James and Carolyn Bagniewski	Michael Boerger	Cece Caron and Thomas Erb	Ruth and Daniel Devitt
Terry Baier	Patricia Boge	Steve and Susan Carpenter	Michael and Carmen DeYoe
Valerie Bailey-Rihn and	Benjamin Bomkamp	Thomas Carr, Jr.	James and Sue Dillenbeck
David Rihn	Elliotte Bowerman	Stephanie Carroll	Doris Doherty
Kevin and Betty Baird	Jan Brady	John and Sandra Castek	Mark and Jane Domroese
Dr. Vance Baker	Sarah Bratnober	Castle La Crosse	Marcus and Judy Doolittle
David Bange	Tony and Teresa Brenengen	Peter Catalano	Dawn Drake
Jim and Marlene Bannen	Don and Cheryl Brenengen	Pat Cavadini	Mary and Leland Drangstveit
Frank and Irene Barmore	J.F. Brennan Company	Ursula Cejpek	Danya Dravis
Bruce and Kathy Bartel	Peg Brenneke	Mark and Minda Chamberlain	Frank Dravis
Tom and Kathy Barth	Paul Brewer	Connie Champnoise	Anne Drecktrah
Craig and Mary Bartos	Ann Brice and Bill Haviland	Barbara Chase	Jan Dressel
Laurie Bartz	Tom Brindley	Susmita Chiplunker	Mary Dresser
Bill and Marsha Bateman	George and Judy Brockman	Rebecca Christoffel	Driftless Angler
William Bauman	Dan and Jane Brodrick	and Andrew Williams	Driftless Café
Allan Beatty	Craig and Sandy Brooks	Joan Christopherson-Schmidt	Drifty's Canoe Rental
Dennis and Joyce Beekman	Dianna Brown	Abbie Church	Sandra Drobnick
Julia and Thomas Behrenbeck	Michael Brown	Joel and Sandra Clark	Patrick DuCharme
Randall Bekkers and	Trevor Brown	Cleary-Kumm Foundation	Peter Duerkop
Laurie Harmon	Jennifer and Mark Brumm	Jerry Cleveland	Kathy Dummer
Erin and Colin Belby	Bonnie Buchman	Roland Cline and Mary Papenfuss	Leo and Marie Dummer
Howard and Katherine Bell	Martin and Kathleen Buehler	Drs. John Cochran and	Jane Duren
Dr. Bill and Heidi Bender	Deborah Buffton and	Margaret Grenisen	Tim and Sue Durtsche
Robert and Marilyn Bendiksen	Stephen Minnema	Timothy and Cheryl Collins	Meg Earsley
Benevity Community	Jac and Susan Bulk	Susan H. Colliton	Stephanie Eastwood
Impact Fund	Joan Bunbury	Community Consultants, LLC	Joseph and Robin Edmunds
		Deb Congdon	Eric and Kay Edquist
		John and Lisa Conzemius	Greg and Diane Egan
		Ken Cornish	Edie Ehlert
		Coulee Region Land Surveyors	Tim and Linda Eisele
		Timothy Cox	Karen Ekiss
		Kathleen Crittenden	Jon E. Ellefson
		Ken and Val Critzman	The Elliott Family Fund
		Mary Lee Croatt	Sr. Helen Elsbernd

Barbara Emerson-Sylla
John and Kathy Engh
Linda and Don Eppelheimer
Eric and Inese Epstein
Carey Erdman
Jen and Andrew Erickson
Mark and Jan Eriksen
Scott and Kathryn Escher
Ms. Joey Esterline and
Scott Giraud
Gladys Eternicka
Scott and Wendy Evert
Pam Eyden
Paul and Kathy Fairchild
Louise Fawcett
Melani Fay
Rita Feeney
Jay and Diane Fernholz
Joan Filla
Mary Fillner
Financial & Investment
Management Group
Robert and Barbara Fisher
Patrick Fisher
Mark and Roxanna Flaten
Kristen Foehner
Edward Ford
Melinda Duncan Foreman
Chuck and Debbie Forer
Mark and Kati Forsythe
Jim Fowler
Fowler & Hammer, Inc.
David and Barbara Foye
Barbara and Donald Frank
Harold and Mary Frank
Franciscan Sisters of
Perpetual Adoration
Dr. Robert and
Maureen Freedland
Freight House
Annette Friedewald
Ruth Frise
Donald and Susan Fritsch
Andrea and Mark Fritts
David and Lois Fritz
Anita Froegel
Sandra Frost
Frozen Film Festival
Steven Fruechte
Joyce Fulford
John Gaddo and Nancy North
Mary Ellen Gallagher
Jim and Jan Gallagher
Sheila Garrity
Jan and Lynne Gasterland

Ned and Carol Gatzke
Joseph Gautsch
Sue Anne Gelatt Foundation
c/o Trust Point
Philip and Melissa Gelatt
Elizabeth George and
Paul Voytas
Jeff and Elaine George
David and Abigail Gerzema
Kathy Geschke
Paul and Natalie Geyer
Tom Gianoli
Tom and Ann Gibbons
Mike and Kathy Giese
Karl and Bonnie Gilbertson
Judith Gill
Karen Gill
Ted Glasbrenner and
Jenifer Strand
Drs. James and Jo Glasser
Robert and Becky Glesne
Beth Glidewell
Becky Goche and
Cheryl Groom
Lana Goldsmith
Margaret Graff
Brian Gray
John and Kris Greany
Leonard and Helaine Greene
Mary Jane Greenewald
Dianne Greenley
Joel Greiner
Bill and Kathy Gresens
Herbert Grimek
Amy Groskopf and Kent Turner
Chris Gruendeman
Ole and Judy Gulbrandsen
Andrea Gundersen
Sigurd and Jean Ann Gundersen III
Gundersen Health System
Chuck and Carmen Gustafson
Rev. Ronald and Merle Gustafson
Peter and Janice Gutierrez
Randy and Yvonne Guzman
Julie Haas
Dave Hackett and Ellen Brooks
Dale Hadler
Sara Hafften
Brian and Julie Hagan
Jon and Kathy Hageseth
Thomas and Amber Halada
Cindy and Paul Halter
Richard and Patricia Hamann
Bud Hammes
Andrea Hansen

Karen Hanson
Janis Hanson
Charles and Cheryl Hanson
Mike Hanson
Rick Hanson
Roger and Lisa Haro
Peter Hartman
Jennifer Hayes
Paul and Bernadette Hayes
Paul and Philia Hayes
Jaime Healy
Ralph and Joann Heath
Alan Hecht and Kristin Swanson
Sandra Heggeness
Richard and Jane Heiden
Herb and Barb Heili
Dr. Mark and Anne-Marie Hein
Dale and Kathleen Hein
Renee Heintz
Patricia Heizler and Aaron Berg
Jay Heldt and Karen Kouba
Mary Helgren and Richard Radek
Clare Henneman
Bonnie Herrick
Amy Heuslein
Betty Heuslein*
Kathryn Hietbrink
Joan Higgins and Carl Her-
rmann
Edwin and Nancy Hill
Bob and Karen Hillary
William and Deborah Hiller
Lorne Hillier
Derek and Cheryl Hilst
Harry and Jean Hindson
Randy Hoard
James Hoban
Randall and Donnalee Hoelzen
Dave and Patsy Hofer
Mike and Mary Carole Hoffman
John and Rita Hoffmann
Gracie and Jeff Hohman
Drake Hokanson and Carol Kratz
Havvah Holl
Betsy Chris Holland
Jane Holzhauser
Hoof-n-Hair
Joe and Deb Hooyman
Curtis Hottinger
Jeff Houser and
Beth Mullen-Houser
Kathy Hovell
Robert and Mary Hubbard
Todd and Lin Huffman
David Huggett

Christopher and Krista Huiras
James and Jane Hulke
Adam Huntington
Martha and Peter Huser
Elisabet Ibach
Cathy Irvin
Karrie Jackelen
Jeffrey and Amanda Jackson
Tim and Lisa Jacobson
Wayne Jacobson
Kirk Jacobson and Donna Pittman
Jodi Jansky
Elizabeth and Jeff Janvrin
Jack and Leslie Jeatran
Jim and Linda Jenkins
Carolyn Mahlum-Jenkins
and Glen Jenkins
Niels and Beth Jensen
Melinda Jenson
Jackie Joday
Johns, Flaherty & Collins, sc
Phyllis and Dan Johnson
Leta Johnson
Tom and Patty Johnson
Kent and Lee Johnson
Bill and Catherine Johnson
Tim and Regina Johnson
George and Carmeen Johnston
Michael and Susan Johnston
Mark Jolivette
Janis Jolly
Margaret Jones and Dave Linton
Bob and Mary Jothen
Justin Trails Resort LLC
George and Donna Kaiser
Jack and Ellen Kallies
Jeanne Kaminski
Gerald Kann
Sr. Karen Kappell
Mark and Jacqueline Kartman
Tom and Annemarie Kasper
Bill Katra
Jane Keeley
Karen and Michael Keil
Robert and Mary Kelemen
Jerry Schmidt and
Christine Kelley
John and Sangeetha Kelly
Kevin Kenow and Ruth Davis
Michael and Donna Keogh
George and Sharon Kerckhove
Roger and Mary Kerr
Maude Kettenmann
Andrew Khitsun
Kenneth and Deneen Kickbusch

Cameron and Christa Kiersch	Richard Lagerman	Ron Malzer and	Mike Mooney and
Grear and Linda Kimmel	Robert and Mary Lake	Margaret Dihlmann-Malzer	Sara Anderson-Mooney
Ron and Tawni Kind	Land Trust Alliance	Janet Maney	Jerome Mooney and Susan Ring
Maureen Kinney	David and Karen Lange	Gretchen Manthei	Doug Moore
Tom and Linda Kirch	Rick and Mary Kay Lange	Mary Marshall	Beth Moore
Larry and Susan Kirch	Ann Larkin and Paul Owecke	Ellen Martell	Jim and Barb Moorhead
Khrista and Liz Kleba	Rebecca Larsen	Mike Martin and Laura Siitari	Betsy Morgan
Dr. Fredric and Marion Kleinberg	Joseph Larson	Ann Martin	Ernest and Heidi Morris
Butch and Lola Kleinsmith	Heidi Larson	William and Candace Marx	David R. Morrison
Kathryn Kleist	Randy and Nancy Larson	Andrew and Melanie Matchett	Mark Mosey
Allison Kleist	Ken and Lois Larson	Edward Mathwig	Michael and Susan Mosling
Ruth Ann Knapp	Tim Larson	Kathryn Mayer	Louis and Christy Mouglin
Sue Knopf	Patricia LaRue	Jeff and Barbara McArdle	Ursula Muehlechner
Cara Knothe	Joel Lazinger	John and Marlene McCabe	Kurt and Mary Mueller
Carol Ann Knox	Seamus Leahy and Lisa Zinzow	Dr. Mark McConnell	Teresa Mueller
Karen Knox	John and Louise Leary	James McCormick	Paul Mueller
Ralph Knudson and	Nicole Lebakken	Kevin and Jenny McCoy	Mary Mullen
Nancy Heerens-Knudson	Larry Lebiecki and Anita Evans	Don and Patty McCrery	Cecilia and Jared Mullenbach
Melinda Knutson and Dave Ford	Carol LeClaire	Maureen McDowell	Deborah Mulligan and Jon Lund
Kevin and Dianne Koch	Stanley Ledebuhr	Dick and Julie McGarry	Mike Mulroy
Rita Koch Thometz	Jean and Mark Ledman	Mary McGrath	Dr. James Munn
Robert Koehler	Chuck and Linda Lee	Gladys McLenahan	James and Phylis Munsch
Walter and Judith Koehnlein	Scott and Judy Lee	Robert and Patricia McLoone	Jan and John Munson
Fred and Lou Anne Koerschner	Lois Lehmann	Gene and Carolyn McNurlen	Martin and Pam Murphy
Catherine Kolkmeier	Gary and Ruth Ann LeMasters	Barbara McPeak	Shaun Murphy-Lopez
Martha Koloski	Richard and Dorothy Lenard	John and Dee Medinger	Mutschler Family Foundation
Lynn Konsela	Stephen and Cynthia Lenser	Kim Mello	Kathy Mydy and Craig Sallander
Jean Koosman	Jeremy Lenth	Richard Meloy	National Active and Retired
Ann and Carl Korschgen	Lynne Leuthe	Mary Menne	Federal Employees La Crosse
Gloria Kowalski	Thomas and Margaret Ley	Lillian Meredith	Ch. 370
Stephen and Barbara Kozerowitz	Lennie and Maria Lichter	Mergenthaler Family Fund	National Wild Turkey Federation
Eric Kraemer and Francine Klein*	Carolyn Lindeman	Meringue Bakery and Cafe	The Nature Conservancy
Mike and Becky Kreiling	Emily Linnell	Dave Mertins	Nancy Neil
Nancy Kroner	John Linnell	Cindy Mettelle	Julie Nelson and Ross Seymour
George and Elizabeth Kruck	Peter Linnert	Lance and Carol Meyer	Neil and Linda Nelson
Anthony and Sharon Krueger	Fred Lintelmann	La Verne Michalak	Karen Nelson
Dennis and Sharon Krumenauer	Sandra Locher	Bob Michelson	Susan Nesbit
Barbara and Joseph Kruse	Dr Jack and Joyce Lockhart	George Mickelson	Greg and Laura Nessler
Al Kube	James Logan	Mid-West Family La Crosse -	Tim and Jodi Neve
Patricia Kulig	Laurie Logan and Alice Bachop	Z-Care	Sonya Newenhouse and
Jeffrey Kunzelman	David and Connie Long	Robert and Patricia Mika	Cecil Wright
La Crosse Area Convention &	Warren and Denise Loveland	Susan Milisch and Ilene Heij	Marilyn Nieckarz
Visitors Bureau	David Lowman	Mill Creek Land &	Tom and Lori Nigon
La Crosse Community Foundation	Ken and Sara Lubinski	Cattle Company, LLC	Jim and Ruth Nissen
Milo and Beverly Mayer Mach	Ted and Lisa Ludwig	Dennis and Karen Miller	Loran Nordgren
Family Fund	Kevin Luecke	Christan Miller	David and Carolyn Norenberg
La Crosse Community Foundation	Stephen Luecke	Denise Milton	Dale and Connie Norris
Kerbaugh Family Fund	Ronald Lueth	Minnesota Marine Art Museum	Norse Holding Group, Inc.
La Crosse Community Foundation	Tom Lukens and Pam Saunders	Cindy Mischnick	Tom Novacheck
Fred and Mary Ann Funk	James and Jean Lund	Griffin Moe	James Novak
Family Fund	Steven and Patricia Lundsten	Moen Sheehan Meyer	Darrin O'Brien
La Crosse Distilling Co. LLC	John Lyons	David and Sheila Momont	Mike and Sylvia O'Brien
La Crosse Graphics	Helen MacGregor	John Monson	Terry O'Connor
La Crosse Queen	Mike and Carol Mader	Mary Monsoor	Marcie and Mike O'Connor
La Crosse Symphony	Randy and Rita Magno	Maureen Mooney	Sharon Odahl

Dennis and Sarah Ohlrogge
 Allan and Katie Ohm
 Calvin and Joyce Oium
 Jane O'Laughlin
 Rita Oldenburg
 Phyllis Olson
 Olson Solar Energy
 James and Donna Omernik
 Keith Organ
 Organic Valley
 Scott Oslick
 John Osmundsen
 Lyle Ostrander
 Winston and Cheryl Ostrow
 Florence L. Overgard
 Steven and Connie Overholt
 Palmer Abstract Inc.
 Sandy Pankratz
 John Papenfuss
 Benjamin Parsons
 Paul and Cindy Patros
 Andy and Laura Patten
 Eugene Patterson
 MaryEllen Paudler
 Ray and Ilene Pavelko
 Robert and Eloise Pearson
 John and Cathy Pederson
 Marilyn Pedretti
 Susan Pehmoeller
 PeopleFirst Leadership
 People's Food Cooperative, Inc.
 Harry and Sylvia Peterson
 Kurt and Joan Peterson
 Russell and Rita Peterson
 Joe and Gretchen Pfeiffer
 Craig and Alli Pierce
 Carla Pies
 Kevin Pifer
 Pine Knob Organic Farm
 Allan Pischke
 The PMG Foundation, Inc.
 c/o Trust Point
 David and Lynne Polodna
 Darrell Pope
 Laurel Porter
 Michael Porter and
 Rose Hammes Porter
 Cy and Mary Post
 George Potaracke
 Prairie Moon Nursery, Inc
 Prairie Rod & Gun Club
 Diana Pray
 Pump House Regional Arts
 Pete and Barb Putnam
 Larry and Sherry Quamme

Steven and Martha
 Querin-Schultz
 Ron and Jane Rada
 Robert and Mary Ragan
 John and Mary Rahn
 Randy and Michelle Rank
 Lee Rasch and Susan Fox
 Mary Reber
 Scott Reber and Marily Shultz
 Leah Reimann
 John and Kathy Reinhart
 George and Marjorie Renner
 Bob Retko and Kay Wienke
 Tom and Cindy Rhorer
 Barbara Rice
 John and Nancy Rieder
 Jon and Ann Rigden
 Eldon and Rebecca Rike
 Jim Ringstrom
 Mike and Kathy Ripp
 K. Fred Rist
 Frances Rivoire
 Rivoli Theatre
 Daniel Roane
 Shelley Roberts and
 Dewey Moore
 Craig Roberts and
 Mark Nofsinger
 Cam and Carlene Roberts
 Stu and Char Robertshaw
 Jim and Diane Rogala
 Richard and Joan L Romeyn
 Jo Ronning
 Arnie Roper
 Mike and Ellen Rosborough
 Adam and Lori Rosenstein
 Judith Rosenstein
 Roger Roslansky
 Arden and Penny Ross
 Michael Ross
 Robert Ross
 Betty Roth
 Brooks Rownd
 James and Kathryn Rozovics
 Brian and Karen Rude
 Charles Rudrud
 Susan Ruedisili
 Gerard Rugowski and
 Jayne Stokke
 Gary and Jean Ruhser
 Gwen Ruppert
 Paul and Barbara Rusterholz
 Kevin and Anna Ryan
 Dennis and Sharon Ryan
 Emile and Marcia Salvo

Chris Saudek
 Nell and David Saunders-Scott
 Heather Sayles
 Jed and Melanie Schaller
 Carol Schank
 Nancy Schermerhorn
 Firman and Cheryl Schiebout
 Robert and Linnea Schieche
 Randy and Marian Schiesser
 Allan E Schilling III
 Jane Schley
 Patricia Schmid
 Robin Schmidt
 Robert and Carol Schmidt
 Schmidty's
 Gail Schneider
 James and Sheri Schneider
 Adam Schneider
 Rosalie "Roz" Schnick
 Paul and Joan Schoenfeld
 Jay Schotzko
 Signe Schroeder
 Steve Schuldt
 Vicky and Jon Schultz
 Michael and Karen Schultz
 Alan and Rosanne Schulz
 Dale Schumacher
 Val Schute and
 Deb Prath-Schute
 Jacob Sciammas
 Glenn and Lila Seager
 Jeri Sebo
 Rachel Seebach
 Laura A. Seielstad
 Jessica Selby
 Marty Sellers and
 Nancy Hartje
 Ruth Sellers
 Jeff and Kris Sexton
 Sharon Sharp and
 Doug McVey
 Tom and Sharon Sharratt
 Barry and Ruby Shaw
 Carl and Denise Shedivy
 Allen Blake Sheldon
 Dr. Charles and Judy Shepard
 Sister Nina Shephard
 Mark and Krista Sherin
 Linda Sherwood
 John Shillinglaw
 Larry Shingleton and
 Mary Frohnauer
 Freddie Shird and
 Joanne Adragna Shird
 Sierra Printing Co.

Michael Sigman and
 Kelly Krieg-Sigman
 Kenneth and Paula Silha
 James A. Sill
 Jim and Rose Sime
 Steve and Manyu Simpson
 Don and Dee Dee Sims
 Scott Sinks
 The Sinsinawa Dominicans
 Joseph and Michelle Skemp
 Dr. Samuel and Jean Skemp
 Fred and Jean Skemp
 Larry Skendzel
 Dave and Barb Skogen
 David and Gretchen Skoloda
 Lucas and Steph Skye
 Thomas and Judith Sleik
 Kelly Slentz
 Larry and Carolyn Sleznikow
 Lucy Slinger
 Barbara Smith
 Chuck Smith
 Grant Smith
 James Smith
 John and Joanne Smith
 Kurt and Mary Margaret Smith
 Art and Pat Soell
 Bonnie Sokolov
 Vanee Songsiridej and
 Terry A. Baker
 Jonathan Specht
 Jeanne Specht
 Kathy Spelker
 Edward Spencer
 Mark Spiess
 David Spildie
 Lon and Rebecca Spooner
 Mark Spriggs
 David Spriggs and
 Nancy Gerlach
 BJ Stanley
 Dennis and Betsy Stannard
 Debra Stantic
 Angie Steele & Michael Steele
 Mary Stefanski
 Neil and Susan Steiner
 Karen Steingraber and
 John Durbrow
 Nancy Steinhoff
 John and Jean Sterling
 Kathy Stevenson and
 Dave Alderman
 Rick Stewart and Lori Schams
 Michael Stewart and
 Angela Stewart-Kick

Peter and Beverly Stickler	Richard and Marcia Thompson	Mary Veldey	Monica Wiebke
Edgar Storey and Wanda DuCharme	Jeffrey Thompson and Sandra Romagnoli-Thompson	Daniel and Laura Venter	Gary and Amy Wiegel
John and Kathy Storlie	Dr. Mark and Theresa Thompson	Steve Ventura and Margaret Krome	Tim Wilfahrt and Lois Peterson
Tom* and Michele Strange	Meredith Thomsen	Verve, a credit union	William Wilharm
Andrew and Sara Strassman	Brett Townsend	Theresa Vick	Will and Joe Williams
Richard and Pamela Strauss	Bhaji Townsend	Jason Vidas and Erin Malone	Ruth and Marc Williams
Susan Strehl	Rev. Allan and Carla Townsend	Viroqua Food Co-op	Marc and Janet Williams
Michael and Patricia Strittmater	Jon and Peggy Traver	Village of Viola	Douglas Wilson
Shel and Ann Stromquist	Tom and Jane Treglowne	Joan Volkmann and John Jones	Pat and Bobbie Wilson
Jeffrey Strong	Jennifer Trendel	Ken Von Ruden	James and Marcia Ann Wine
The Paul E. Stry Foundation	Mary Tronick	Kathie Vongroven	Bill Wingen and Barb Chaney
Bradley and Lynn Sturm	Trout Unlimited	Diane and Bill Waller	Wisconsin Land Fund - Greater Green Bay
Kelly Sultzbach	Trust Point, Inc.	Robert and Lori Wallock	Community Foundation
SUTRA Global Imports	Donald and Nancy Tubesing	Edward and Roberta Walsh	Robert B. Wish
Robert Swartz	Rob and Kathie Tyser	Steve and Kim Weber	Mary Wisneski
Robin and Stephanie Swartz	Craig and Pam Ubbelohde	Mark and Marilyn Webster	Wanda and John Wochos
Howard Sweet and Jamie Warren	Matt Urch and Sara Martinez	Russ Wedeking	Janet Wollam and Dana Fisher
Duanne and Ann Swift	Jonathan and Debera Uy	Connie Weedman	Wonderstate Coffee
Jerry and Sue Swim	Keith and Lynne Valiquette	Kathy Wehrs	Levi Wood
Peter* and Marie Tabor	Thomas Van Der Linden and Jean Silberman	Ken Weinberg	Margaret and Daryl Wood
Carol Taebel	Gary Van Domelen	Topf Wells and Sally Probasco	Woolworth Family Fund
Target Circle	David and Betty Van Dyke	Tom Seals and Ruth Wene	Tim Wucherer
Paul Taylor	Robert and Dana Van Hoesen	Al and Jane Wernecke	Pat Wuttke
Duane Teschler	Kathy Van Kirk	Suzanne West	Mary Yahle
Dr. John and Rachel Teske	Joseph Van Moer	Angela West Blank	Joan Yeatman
James Theler and Suzanne Harris	Rebecca Van Ness	Mary Westlund	Richard W. Yerkes
John and Pam Thiel	Andrea Van Sickle	Dorothy Wetterlin	John and Ev Yungerberg
Dan Thoftne	Laura VanderLei and Matthew Kubly	John Wetzell	Nick and Yonok Zeller
Eric Thompson and Mary Graziano	Larry Vangen	Eric and Vicki Wheeler	Roger and Carol Ziff
Craig and Mary Thompson	Unja Varnum	Joanne and Michael White	Patricia Zummo
		Jim and Jo Ann Wickizer	Krysten Zummo
		Simon and Theresa Widstrand	

**Deceased*



The Stewardship Circle

Members of this special group of Conservancy supporters have made a lasting commitment to land protection through a variety of estate-planning tools. These include bequests in a will or trust, charitable gift annuities, charitable remainder trusts, IRA designations, and gifts of life insurance. Please consider joining this dedicated group of conservationists today by making Mississippi Valley Conservancy a part of your legacy plan.

Dave Bange	Dean* and Phyllis* Dempsey
Allan Beatty	Don and Linda Eppelheimer
Sara Bentley	Jen and Andrew Erickson
Thomas Boston*	Robert and Barbara Fisher
Jim* and Jan Brady	Jim Fowler
Dianna Brown	Barbara and Donald Frank
Kurt Brownell*	DK Franson
Mark and Jennifer Brumm	David* and Nancy Goode
Deborah Buffton and Stephen Minnema	M. Jane Greenewald
David Burbach	Kim Hammer
Ed Burgess	Bernard Hammes
Tom Byerly	Mark and Anne-Marie Hein
Frank and Kristi* Cadwell	Ed Hill
Pat Caffrey and Peg Zappen	Lin and Todd Huffman
Emily Campbell*	Tim Jacobson
Susan and Steven Carpenter	Maggie Jones and David Linton
Abigail Church	George and Sharon Kerckhove
Susan Colliton	Maureen Kinney
	Sue Knopf and Jim Rothwell*

In Honor

Carol Abrahamzon
 John and Barbara Auby
 Allan Beatty and Michael Ross
 Tony and Reese Brenengen
 Jon Cherney
 Anna DeMers
 Drake Hokanson and
 Carol Kratz
 Tarah and Nate Janney
 Leonard and Alberta Kick
 Mark Mattison
 MVC Staff and Board Members
 Joe Palmer
 Rick and Eric Schermerhorn

David Spriggs
 Ann Tyndall
 Eugene and Mabel Volden

In Memory

Constance Arneson
 LeRoy Atkins
 Shirley Bowerman
 Jim Brady
 Kristi Ann Cadwell
 Jim Czajkowski
 David Kurtz Ebbert
 Esther Fransen
 Mike Genz
 Laurie (Jaz) Giklng
 Barb Hammes
 Betty Heushein

Michael Johnson
 Fran Kaplan
 Robert 'Bob' Kathan
 Francine Klein
 Mike Limberg
 Linda Lyche
 Bruce Miller
 Rita Pehler
 H. Paul Phillips
 Marlene Roesler
 Elaine Roob
 Andy Roth
 Tony Scholze
 Thomas Strange
 Peter Tabor
 Kathryn Trudell
 Jean Tyser

*We thank
 these generous
 organizations for
 their support in
 2022.*

CONSERVATION PARTNERS

PLATINUM

Dahl Automotive
 Franciscan Sisters of Perpetual Adoration
 Vendi Advertising

DIAMOND

Olson Solar Energy
 Radisson Hotel La Crosse

GOLD

American Transmission Company
 Associated Bank
 Fowler & Hammer General Contractors
 J.F. Brennan Company, Inc.
 Organic Valley

SILVER

3 Amigos Property Management
 Dairyland Power Cooperative
 F.J. Robers Co., LLC
 Gundersen Health System
 Mayo Clinic Health System
 People's Food Cooperative

MORE WAYS TO PROTECT LAND

Gifts of Stock

Gifts of appreciated stock can save you taxes in two ways. They can help avoid paying capital gains tax on the increase in value of your stock, and you can receive a tax deduction for the full fair market value of the stock on the date of the gift.

Planned Giving

The Conservancy can be remembered in wills or living trusts through cash or property bequests. This is one of the simplest ways to make a future gift.

Tax-free Distributions from your IRA

If you are 70½ or older, you can make a tax-free distribution from your traditional or Roth IRA to Mississippi Valley Conservancy. You can donate up to \$100,000 each year without incurring income tax on your withdrawal.

For more information, contact Carol Abrahamzon today at 608-784-3606 x4.

Carl and Ann Korschgen
 Al and Carol* Kube
 John and Louise Leary
 Mark and Jean Ledman
 Chuck and Linda Lee
 Lennie and Maria Lichter
 Ron and Aileen* Luethe
 Rita McGaughey*
 Richard and Jan* Meloy
 David Morrison
 Maureen Mooney
 Pamela and Martin Murphy
 Jim Murray
 Kathy Neidert
 Gretchen Pfeiffer
 Allan Pischke
 Ron and Jane Rada
 Brian and Christine Reynolds
 Mike and Kathy Ripp

Gerard Rugowski and Jayne Stokke
 Kenny and Mary Kay Salwey
 Gary and Susan Schettle
 Marc and Sue Schultz
 Tom* and Michelle Strange
 Mary Rose Strasser-Colclough
 Sue Strehl
 Craig and Mary Thompson
 Eric Thompson and Mary Graziano
 Keith and Lynne Valiquette
 Laura VanderLei and Matthew Kubly
 Janet Wollam and Dana Fisher

**Deceased*

CONSERVATION SUPPORTERS

Advertising Concepts
 Altra Financial Advisors
 DuraTech Industries
 Johns, Flaherty & Collins, SC
 Johnson Block and Company CPAs
 Mid-West Family Broadcasting
 Prairie Moon Nursery
 Robert W. Baird & Co.
 Seven Rivers Signarama
 Shopdriftless.com
 Trust Point, Inc.
 Verve, a Credit Union
 WKBT/News 8 Now
 WXOW/News 19



1309 Norplex Drive, Suite 9
La Crosse, WI 54601
608.784.3606
mississippivalleyconservancy.org
info@mississippivalleyconservancy.org

Like us on Facebook for more news!

Mississippi Valley Conservancy is a regional, nonprofit land trust based in La Crosse, Wisconsin. The Conservancy has permanently conserved 25,066 acres of blufflands, prairies, wetlands, streams, and farmlands in and around the Mississippi, Kickapoo, and Wisconsin Rivers since its founding in 1997. Over 6,000 acres are open to the public for hiking, bird watching, hunting, fishing, photography, and snowshoeing.

Board of Directors

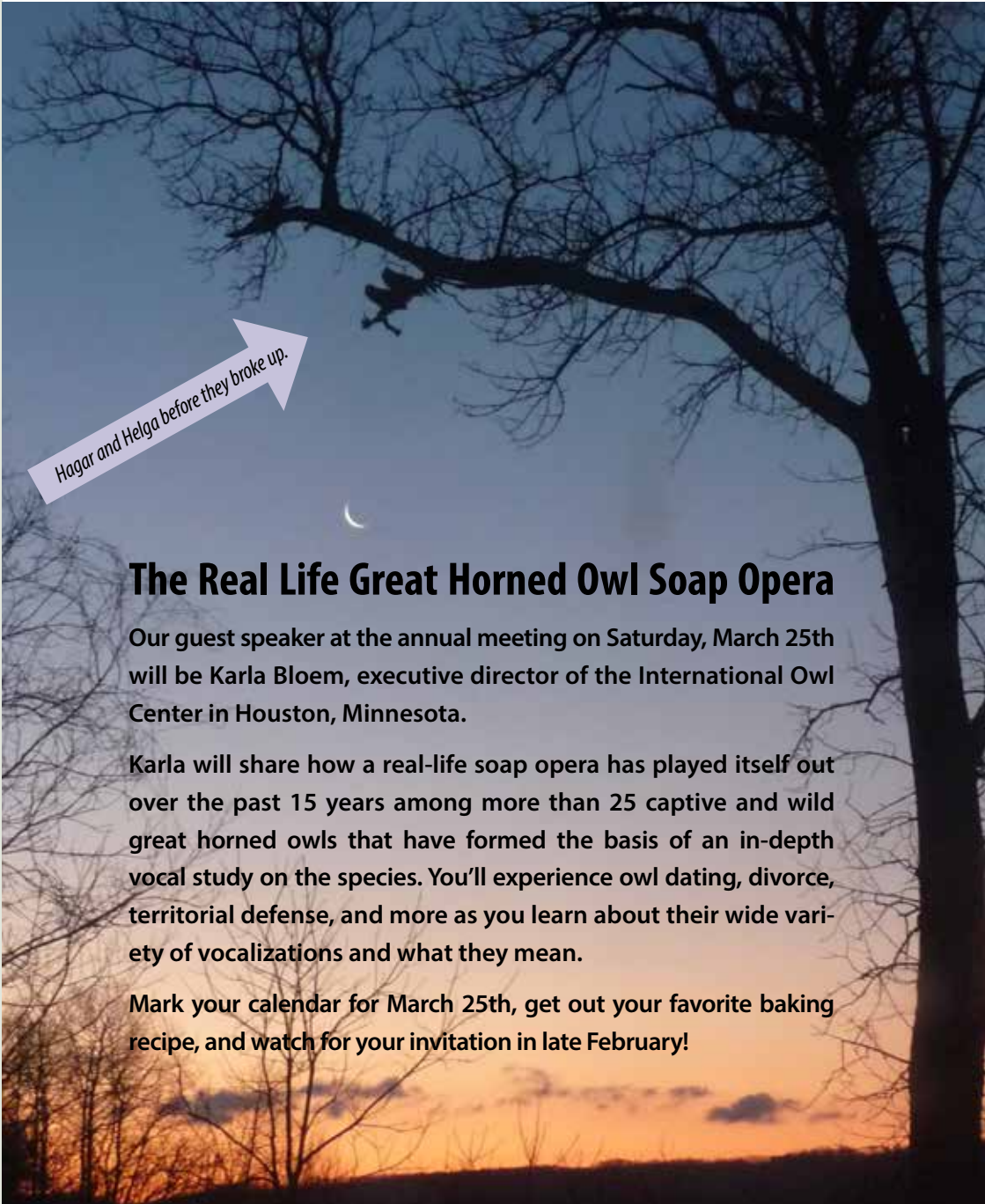
Sue Dillenbeck, *President*
Gretchen Pfeiffer, *Vice President*
Roy Campbell, *Treasurer*
Bob Fisher, *Secretary*
Pat Caffrey
Barbara Frank (*Emerita*)
Don Frank (*Emeritus*)
Sheila Garrity
Philip Gelatt (*Emeritus*)
Laurie Harmon
Drake Hokanson
John Kelly
Maureen Kinney
Dave Lange
Dorothy Lenard
Beth Piggush
Mike Ripp
Ross Seymour
Dave Skoloda
Pam Thiel
Craig Thompson (*Emeritus*)
Rob Tyser
Steve Ventura
Tim Wucherer

Staff

Carol Abrahamson, *Executive Director*
Abbie Church, *Conservation Director*
Chris Kirkpatrick, *Conservation Specialist*
Krysten Zummo, *Conservation Associate*
Connor Kotte, *Stewardship Coordinator*
Levi Plath, *Land Manager*
Genesis Gordon, *Restoration Coordinator*
Nancy Larson, *Finance & Operations Mgr*
Leanne Kruse, *Development Coordinator*
Sarah Bratnober, *Communications Director*

Printed on paper made with mixed-use recycled content.

Non-Profit
Organization
U.S. Postage
PAID
Permit No. 372
La Crosse, WI



Hagar and Helga before they broke up.

The Real Life Great Horned Owl Soap Opera

Our guest speaker at the annual meeting on Saturday, March 25th will be Karla Bloem, executive director of the International Owl Center in Houston, Minnesota.

Karla will share how a real-life soap opera has played itself out over the past 15 years among more than 25 captive and wild great horned owls that have formed the basis of an in-depth vocal study on the species. You'll experience owl dating, divorce, territorial defense, and more as you learn about their wide variety of vocalizations and what they mean.

Mark your calendar for March 25th, get out your favorite baking recipe, and watch for your invitation in late February!