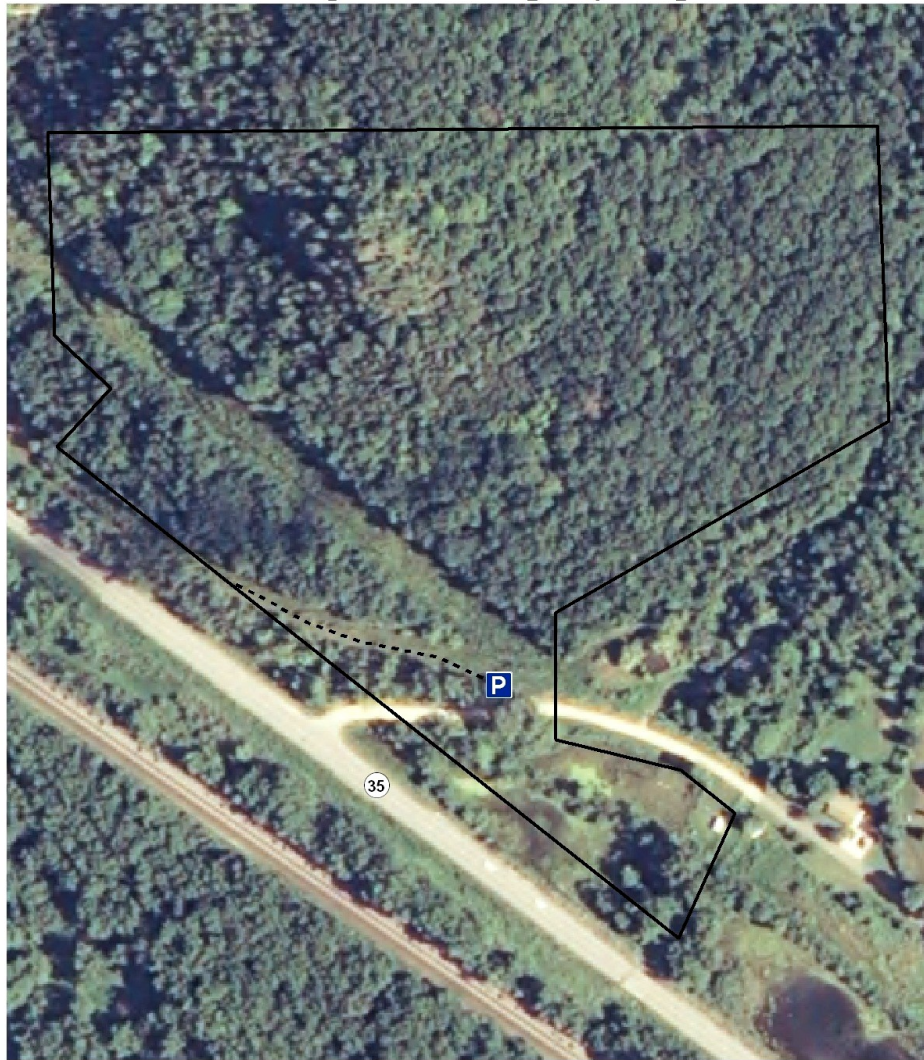
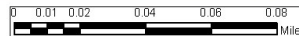


Angel Bluff Property Map



Legend

- Ledebuhr_Property
- Trails
- Parking



Phone: 608-784-3606 Website: www.mississippivalleyconservancy.org

Map Created By: MVC A. Johnson 4-28-2010 -2008 Aerial Photograph

Buffalo Co
Buffalo Twp
T19N R11W
Section 36



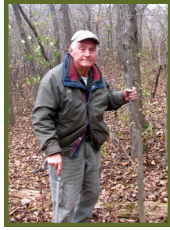
Angel Bluff

Directions

This property is located along Highway 35, Bluff Siding, Wisconsin (Buffalo County). Travel one mile north of the Mississippi River bridge from Winona on the Wisconsin side.

History & Description

Stanley A. Ledebuhr, a retired Winona teacher, donated a 20-acre, Buffalo County bluff directly across the river from Winona to Mississippi Valley Conservancy in 2008.



Ledebuhr, a lifelong Winona resident who taught in Winona public schools for 32 years, stipulated that the land should be open for public use.

He owned the bluff for 30 years and has many memories of playing there as a child. He said that the bluff used to be a nesting site for peregrine falcons.

The scenic bluff property includes dry prairie, dry cliffs, former oak opening, southern dry-, dry-mesic, and mesic forest, emergent aquatic wetland, and surrogate grasslands. These natural communities provide habitat for a variety of rare and declining species, such as the State Endangered Peregrine Falcon, State-threatened Great Egret and the State Special Concern Bald Eagle and a variety of reptiles. The property is visible from St. Mary's in Winona. From the bluff top, one can see all of Winona and a broad swath of the Mississippi River valley.

Ledebuhr registered the property as a natural area with The Nature Conservancy in 1986. TNC asked him for a name for the site and he chose "Angel's Monument," a tribute to his late wife, Marian. He realized the importance of seeing the land protected, especially after a neighbor died and a developer bought the adjacent land and built homes and cut all the trees down. Ultimately, he chose MVC to own the property.

Stewardship

"This is one of the rarest natural communities on Earth; we don't want to lose it on our watch," said George Howe, MVC conservation director.

"The work of land conservation is not just about protecting nature—plants, animals and ecosystems—but also protecting human values and cultural landscapes." —William Cronon, University of Wisconsin-Madison.



View of Wisconsin bluffs from Winona

What Can I do at Angel Bluff?

- ◆ Open to the public for hunting, fishing, canoeing, hiking, wildlife observation and snowshoeing. (See trail map)
- ◆ Hikers are encouraged to take precautions during hunting seasons.
- ◆ Provide environmental education to area school groups.
- ◆ You can help keep our preserve beautiful by carrying out your trash.

Mississippi Valley Conservancy

Mississippi Valley Conservancy was formed by a group of local citizens that responded to growing development in the bluffslands of southwestern Wisconsin by organizing a land trust to ensure conservation of the remaining special places in this region.

MVC works with willing landowners to protect our region's beautiful and natural areas for the enjoyment of current and future generations. We focus on areas of scenic, biological, agricultural and cultural importance throughout nine counties of southwestern Wisconsin (Buffalo, Trempealeau, Jackson, Monroe, La Crosse, Vernon, Crawford, Richland and Grant). Our various tools for land conservation include:

- ◆ Conservation Agreements
- ◆ Land Donations & Purchases
- ◆ Land Acquisition

You can help! Please become a contributing member by sending a tax-deductible donation to:

Mississippi Valley Conservancy

1309 Norplex Dr., Suite 9

P.O. Box 2611

La Crosse, WI 54602

(608) 784-3606

info@MississippiValleyConservancy.org

