

## About Romance Woods

Romance Woods is Mississippi Valley Conservancy's first owned property in the Bad Axe River Priority Area. It includes 35 acres of scenic diverse woodlands, rocky dolomite outcrops and an ephemeral stream. These native communities contain numerous native plant and animal species.

The land has a reputation with the locals as a great hunting spot and supports a healthy population of white-tailed deer, wild turkeys and other wildlife that provide hunting and trapping opportunities for the public. The property also provides potential habitat for numerous non-game species such as neotropical migratory birds as well as for native plant and animal species and mushrooms.

A former logging road runs the length of the property, providing an excellent trail for hiking, snowshoeing, and cross-country skiing.

The land was acquired in 2008 through a generous donation by Ben Anderson and Pauline Jackson.

### Activities allowed

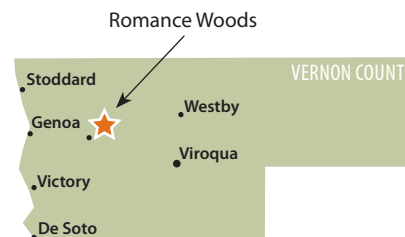
Hiking, showshoeing, cross-country skiing, wildlife observation, hunting, trapping

### Activities NOT allowed

Dog-walking

### Some flora and fauna seen at Romance Woods

- Baneberry
- Black snakeroot
- Bloodroot
- Blue Cohosh
- Common Violet
- Gooseberry
- Jack-in-the-pulpit
- Lady Fern
- Maidenhair Fern
- Round-lobed hepatica
- Sharp-lobed hepatica
- Showy orchis
- Wild columbine
- Wild geranium
- Wild strawberry
- Black Cherry
- Paper Birch
- Burr Oak
- Red Oak
- White Oak



1309 Norplex Drive, Suite 9  
La Crosse, WI 54601  
608-784-3606

[www.mississippivalleyconservancy.org](http://www.mississippivalleyconservancy.org)

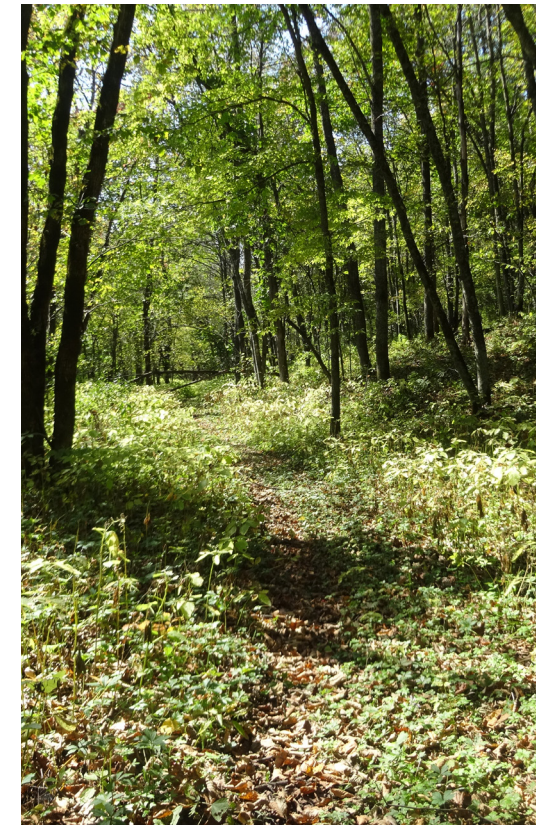
Please respect landowners near Conservancy tracts by observing property boundaries.



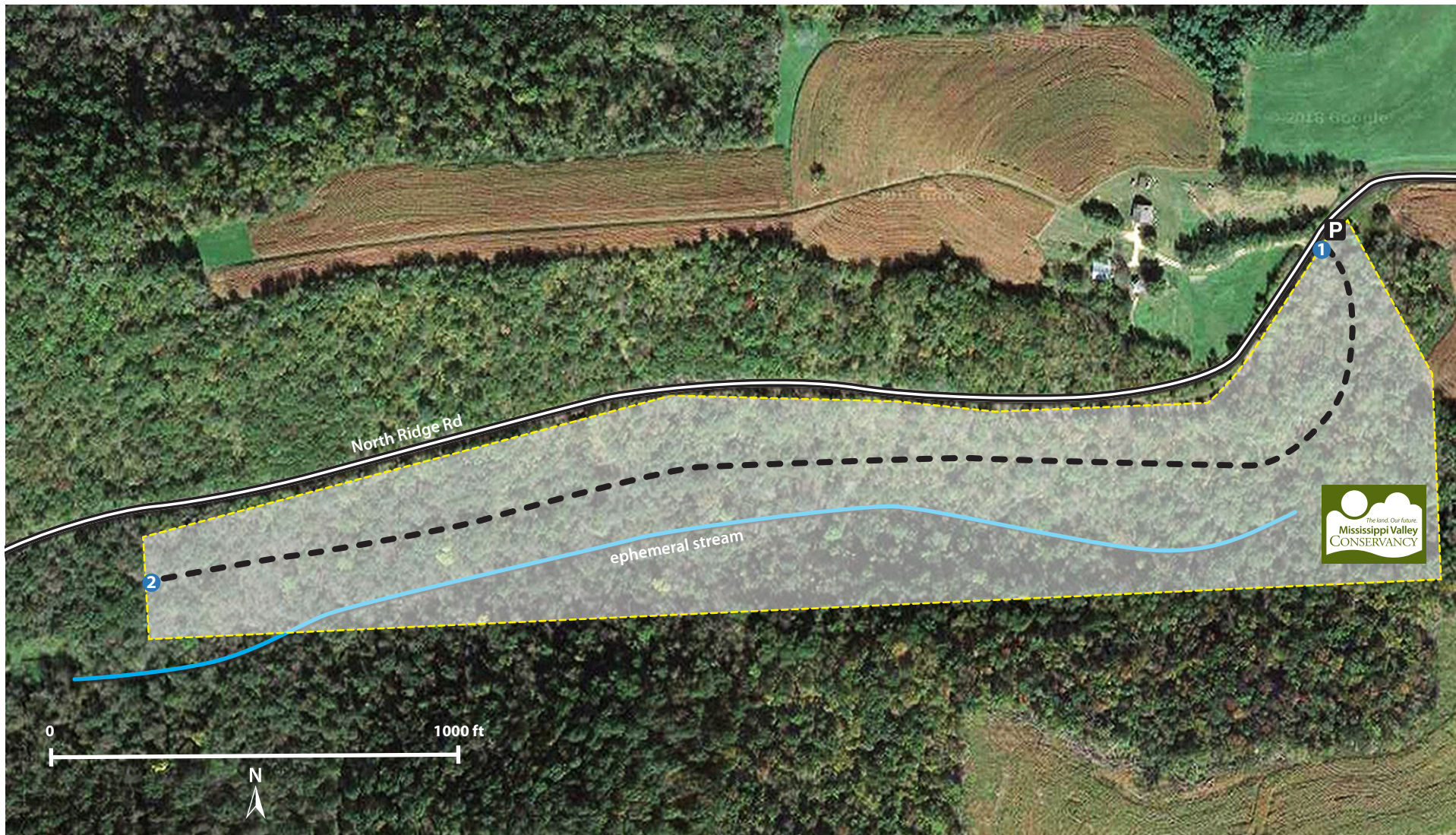
TRAIL MAP

## Romance Woods

Vernon County, Wisconsin







## Hiking Romance Woods

(E2625 N Ridge Rd, Genoa, WI)

The out-and-back trail (1.3 mi round-trip) follows an old logging road, descending over 300 feet.

**How to get to the trailhead/parking lot from La Crosse:** From the intersection of Hwys 14/61 and 35 at the south edge of La Crosse, follow Hwy 35 south 12 miles to Genoa. Turn east on Hwy 56 and go 5 miles. Turn left onto Newton Rd/Romance Rd and go .8 mi. Take a slight right onto North Ridge Rd and follow it 1.4 mi to the parking area on the right.

- 1 Start at the kiosk at the parking area and head west along a .65-mi mowed trail along that follows an old logging road.
- 2 Turn around here and follow the trail back to the parking area.

### Key to Symbols

- P** Parking and kiosk
- Boundary trail
- 1 Point of interest
- Tract boundary
- == Road

Please respect landowners near Conservancy tracts by observing property boundaries.

2019-0131