

## About the La Crosse River Conservancy

This was the first property protected by Mississippi Valley Conservancy (MVC), with the first parcels acquired in 1999. LRC is now 381 acres, 168 owned by MVC and 213 (on both sides of the La Crosse River) provided through donated easements with the City of La Crosse. The property open to the public for hiking, shown on this map, is approximately 105 acres.

Much of the property is former farmland that was once used for pasture and growing marsh hay. When MVC acquired it, the Natural Resource Conservation Service (NRCS) provided some funding and technical expertise for restoration. Thanks to successful restoration work, this riparian marshland and forest habitat once again provides flood protection to neighboring cities and serves as a migratory refuge and breeding ground for countless animal species.

Trails are mowed regularly except when high water prevents access. The side trail to the mound (4 on the map) is closed from April 1 to August 1 to minimize disturbance of nesting sedge wrens. (Note: The mound is natural bedrock that was resistant to erosion as the rest of the river valley was formed.)

### Activities allowed

Hiking, showshoeing, cross-country skiing, hunting, fishing, trapping, canoeing, kayaking.

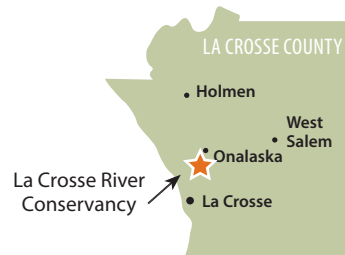
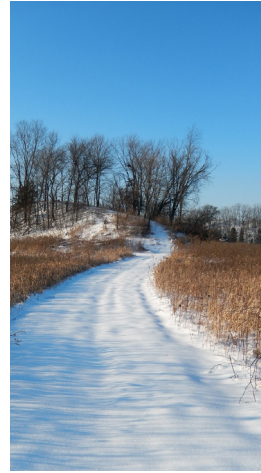
### Activities NOT allowed

Biking, dog-walking, horseback riding, making fires, camping, motorized vehicles.

Please respect landowners near Conservancy tracts by observing property boundaries.

### Some animals seen at the La Crosse River Conservancy

- Canada goose
- Blue wing teal
- Sandhill crane
- Sedge wren
- Rough-legged hawk
- Red-tailed hawk
- Kestrel
- Bald eagle
- Chorus frog
- Beaver
- Muskrat
- Fox
- Coyote



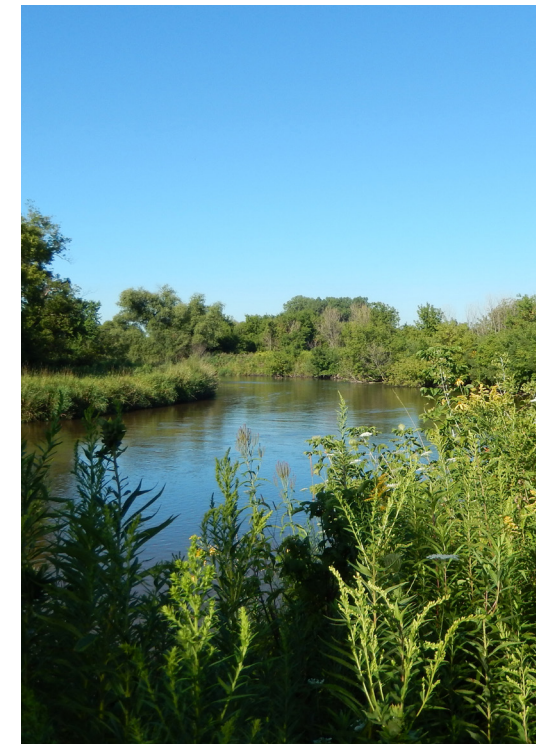
1309 Norplex Drive, Suite 9  
La Crosse, WI 54601  
608-784-3606  
[www.mississippivalleyconservancy.org](http://www.mississippivalleyconservancy.org)



### TRAIL MAP

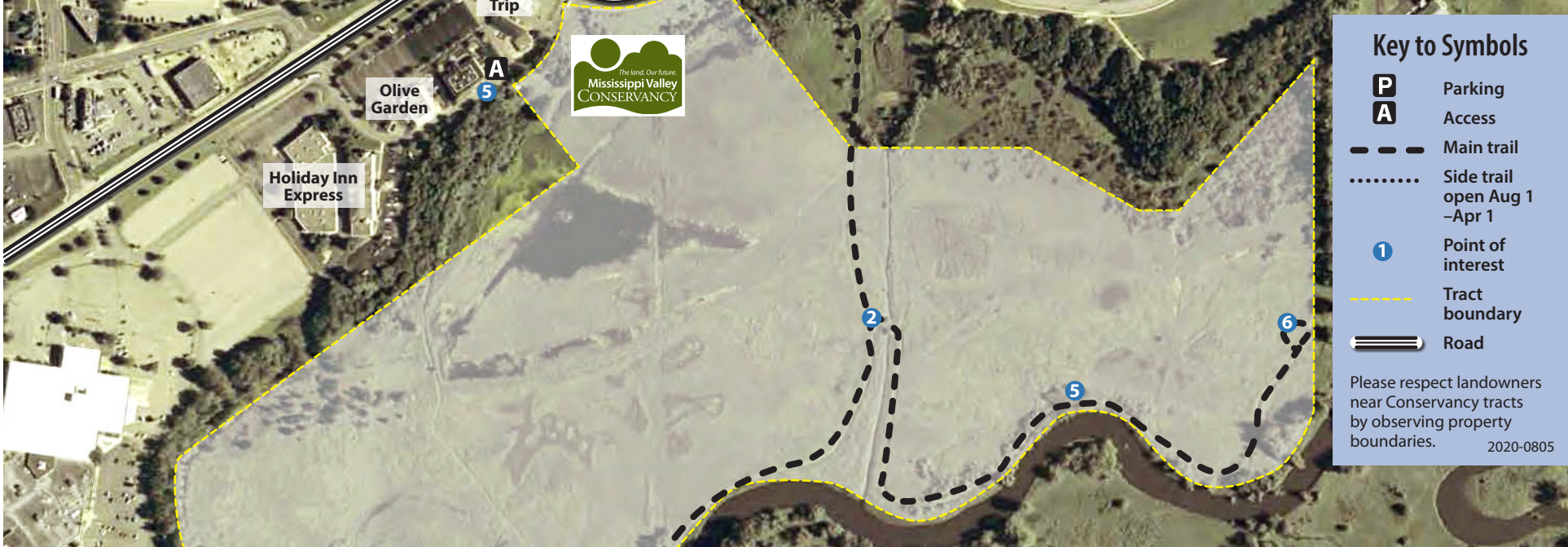
## La Crosse River Conservancy

3060 S. Kinney Coulee Road  
Onalaska, Wisconsin





Mileages	
1 2 5 6 5 2 1	1.6 mi
1 2 3 2 1	1.2 mi
1 2	.3 mi
2 3	.3 mi
2 5 6	.5 mi
3 4	.15 mi



### Key to Symbols

- P** Parking
- A** Access
- Main trail
- ..... Side trail open Aug 1 - Apr 1
- ① Point of interest
- Tract boundary
- ==> Road

Please respect landowners near Conservancy tracts by observing property boundaries. 2020-0805



## Hiking La Crosse River Conservancy (3060 S. Kinney Coulee Rd, Onalaska, WI)

The trails quickly descend from the Highway 16 level (1) to river level (5), where the trail is flat and hiking is easy. There are approximately 1.25 miles of trail.

**How to get to the trailhead/parking lot from La Crosse:** From Losey Blvd at Main St, follow Losey/Hwy 16 north 4.8 mi to S Kinney Coulee Rd. Park along the road near Stoney Creek Inn or in the Gundersen Clinic ramp.

### WEST TRAIL 1 2 3 [4] 3 2 1

- 1 Start here—at the kiosk at the west end of Stoney Creek Inn—and go down the hill.
- 2 Turn right here and continue to 3. Turn around at 3 and retrace your steps to 1.
- 4 **August 1 to April 1 only:** A short out-and-back side trail continues west from 3 to a small oak-covered mound 4 topped by a bench.

### EAST TRAIL 1 2 5 6 5 2 1

- 1 Start here—at the kiosk at the west end of Stoney Creek Inn.
- 2 Turn left here for a 1-mile (round trip) out-and-back hike past an active beaver area at 5.
- 6 Turn around here and return to 1 or try the West Trail at left.