

La Crosse Blufflands North— County FA Trailhead (Mathy)

This site's 477 acres offer scenic vistas and almost 5 miles of hiking trails. From the County Road FA trailhead, you can enjoy an easy hike out onto one of the northernmost sections of the beautiful La Crosse Blufflands. Along this trail, you will see rock outcroppings, blufftop prairies, and the remains of a rock quarry. You may see migrating songbirds and waterfowl overhead, eagles and falcons, and mammals such as mice, rabbits, fox, coyotes, and deer.

This land was protected through the La Crosse Blufflands Protection Program to provide scenic preservation and ensure that the beauty of the City's landscape is not destroyed by poorly-planned development. The program was created to protect rare natural communities like bluff prairies and provide a marvelous outdoor recreational resource for the public. The City of La Crosse and Mississippi Valley Conservancy carry on the proud tradition of land conservation in the Coulee Region that was pioneered by Ellen Hixon and other citizens in the early 1900s who purchased Grandad Bluff and Hixon Forest and donated these gems to the city for all residents to enjoy. Through these efforts, the Conservancy and the City work to enhance the quality of life of all local residents and visitors.

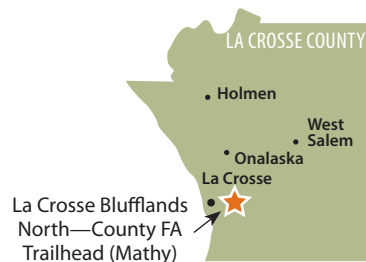
Public Access

Bikes are limited to one trail on this property (see map) and dogs must be leashed. This property is owned and maintained by the City of La Crosse. For more information about activities allowed/not allowed call the Parks & Rec Department at **608-789-7533** or visit cityoflacrosse.org/your-government/departments/parks-recreation-forestry

Please respect landowners near Conservancy tracts by observing property boundaries.

Plants and animals found here

- | | |
|--|--|
| <input type="checkbox"/> Bergamot | <input type="checkbox"/> White-tailed deer |
| <input type="checkbox"/> American bellflower | <input type="checkbox"/> Blue-winged warbler |
| <input type="checkbox"/> Leadplant | <input type="checkbox"/> Henslow's sparrow |
| <input type="checkbox"/> Little bluestem | <input type="checkbox"/> Turkey vulture |
| <input type="checkbox"/> Virginia waterleaf | <input type="checkbox"/> Warbling vireo |
| <input type="checkbox"/> Side-oats grama | <input type="checkbox"/> Wild turkey |
| <input type="checkbox"/> Stiff goldenrod | |



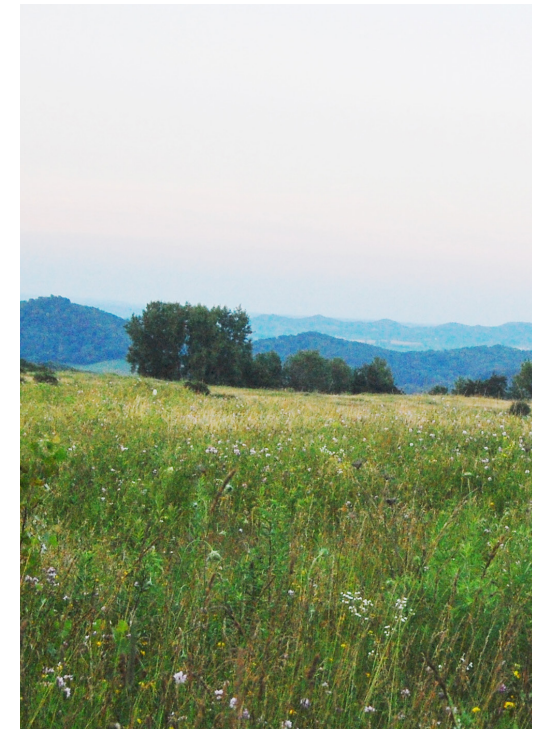
1309 Norplex Drive, Suite 9
La Crosse, WI 54601
608-784-3606
www.mississippivalleyconservancy.org



TRAIL MAP

La Crosse Blufflands North— County FA Trailhead (Mathy)

N3065 County Road FA, La Crosse





Hiking La Crosse Blufflands North—County FA Trailhead (Mathy)

(N3065 County Road FA, La Crosse)

Enjoy mostly open, rolling terrain in an old quarry. There's a somewhat steep climb up to point 5 from the west. Side trails traverse woods and prairie adjacent to the quarry. The main trail is approximately 2.75 miles.

How to get to the trailhead/parking lot from the intersection of Losey Blvd and Main St:

Head east on Main St. It turns into Bliss Rd, which winds up the bluff. Approximately .5 mi past the turnoff to Grandad Bluff, turn left on County FA and drive 1.5 mi to a parking area at FA's end.

- 1 Start at the gate on the west side of the turnaround at the end of FA.
- 2 A large rock is a landmark.
- 3 At a T intersection, head left (north).
- 4 Please do not go north past the MVC property signs here. Turn around and follow the road back to 3 and then go straight, through the quarry and up a hill to the quarry's rim 5.
- 5 You're at the top of the quarry cliff. A right turn takes you along the rim of the quarry and back to the gate. **Side trip:** If instead you head straight, you'll enjoy a 1-mi hike (Bear Run Trail) that includes a birch grove 7, a wooden boardwalk 8, and a small pine forest 9 before heading back to the parking lot.
- 6 At this point you may take a shortcut through the prairie back to the parking lot.
- 10 Coming from point 9, at a T-intersection turn right to curve back to the parking lot. **Side trip:** Turning left at the T-intersection starts a pleasant, rolling, wooded 1.2-mi trail (Quarry Trail). At 11, a barricade prevents bicyclists from continuing on the hike-only part of the trail; they are diverted to the HPT system just before 11. From 12, walk back the way you came or turn north and walk along the road back to the parking lot (another .6 mi), or continue southeast to another parking area.

Key to Symbols

- P** Parking
- Hiking only
- Hiking/biking
- Side trail hiking only
- Side trail hiking/biking
- 1 Point of interest (numbers are on map only, not on trail)
- ★ Overlook
- ⬮ Stop! (Entering private property or dangerous area)
- Tract boundary
- == Road

Please respect landowners near Conservancy tracts by observing property boundaries. 2025-0211

