

About La Crosse Blufflands South— Crown Boulevard Trailhead

From the Crown Boulevard Trailhead, enjoy a hike of moderate difficulty to overlooks and stunning rock formations in the south section of the beautiful La Crosse Blufflands. In this surprisingly remote spot in the midst of the city, you may be lucky enough to see a variety of birds and wildlife, including migrating songbirds and waterfowl overhead, eagles and falcons, and mammals such as mice, rabbits, fox, coyotes, and deer.

This land was protected through the La Crosse Blufflands Protection Program to provide scenic preservation and ensure that the beauty of the City's landscape is not destroyed by poorly-planned development. The program was created to protect rare natural communities like bluff prairies and provide a marvelous outdoor recreational resource for the public. The City of La Crosse and Mississippi Valley Conservancy carry on the proud tradition of land conservation in the Coulee Region that was pioneered by Ellen Hixon and other citizens in the early 1900s, who purchased Grandad Bluff and Hixon Forest and donated these gems to the city for all residents to enjoy. Through these efforts, the Conservancy and the City work to enhance the quality of life of all local residents and visitors.

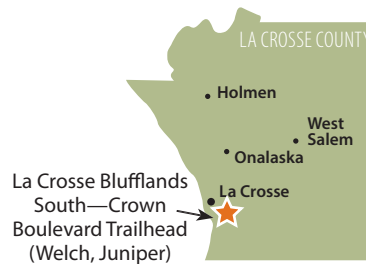
Public Access

Bikes are NOT allowed on this property and dogs must be leashed. This property is owned and maintained by the City of La Crosse. For more information about activities allowed/not allowed call the Parks & Rec Department at **608-789-7533** or visit cityoflacrosse.org/your-government/departments/parks-recreation-forestry

Please respect landowners near Conservancy tracts by observing property boundaries.

Plants and animals found here

- Agrimony
- Amethyst shooting star
- Bloodroot
- Butterfly milkweed
- Compass plant
- Leadplant
- Moonseed
- Pasqueflower
- Downy painted cup
- Blackberries
- Dewberries
- Tufted titmouse
- Turkey vulture
- Leconte's haploa moth



1309 Norplex Drive, Suite 9
La Crosse, WI 54601
608-784-3606
www.mississippivalleyconservancy.org

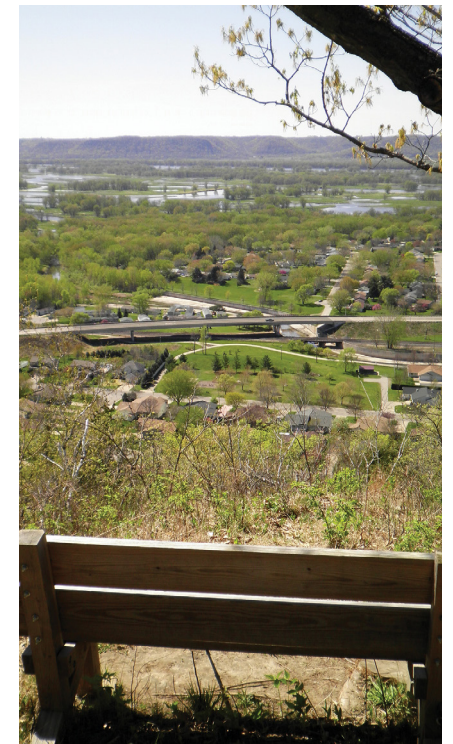
2025-0210



TRAIL MAP

La Crosse Blufflands South— Crown Boulevard Trailhead

Crown Boulevard, La Crosse, Wisconsin



Hiking La Crosse Blufflands South—Crown Boulevard Trailhead

Enjoy a challenging 1-mi out-and-back hike atop a bluff overlooking Mormon Coulee Road and the backwaters of the Mississippi River. Two overlooks provide magnificent views. Expect to see wildflowers and see and hear birds.

How to get to the trailhead/parking lot from the intersection of Losey Boulevard and Ward Avenue:

Head east on Ward Ave. to 33rd St. Turn right on 33rd St. and follow it south to Robinsdale Ave. Turn left on Robinsdale and follow it to Cliffside Dr. Turn right on Cliffside. After .3 mi, turn left on Crown Blvd. and park along the road near the trailhead sign, or go straight to Springbrook Way, turn right, and park along the road. Please observe street parking ordinances.

- 1 Start at the sign on Crown Blvd and head south.
- 2 At an intersection, continue straight on the main trail, which continues for a short distance to a bench with a view of Mormon Coulee Rd 3.

Retrace your steps back to the intersection 2 and take a side trail (the leftmost of three that split from the main trail) and go north to another overlook and some rock formations 4.

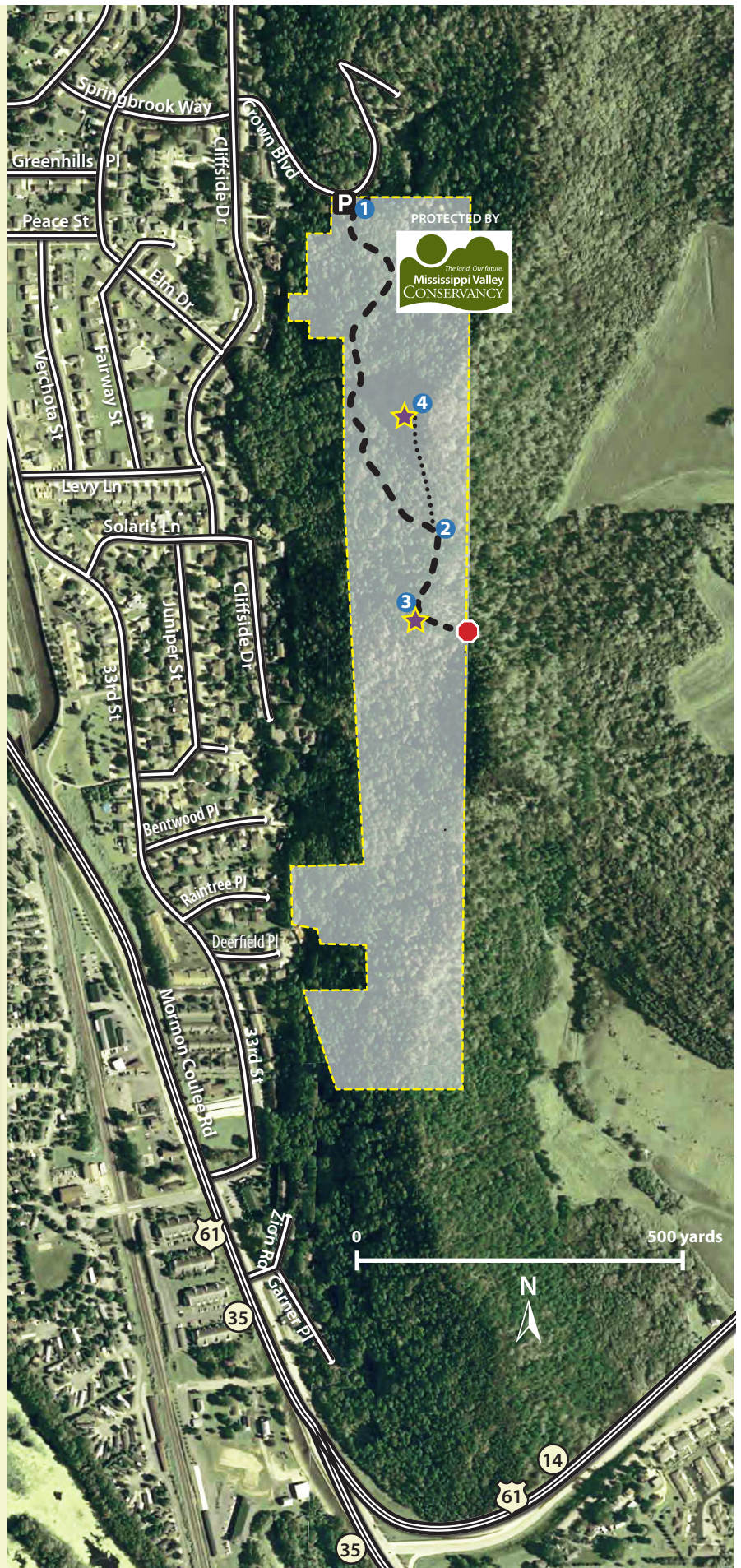
Return to 2, turn right, and return to the trailhead.

Key to Symbols

- Parking
- Main trail
- Smaller trail
- Point of interest
- Overlook
- Stop! (Entering private property or dangerous area)
- Tract boundary
- Road
- Highway

2025-0210

Please respect landowners near Conservancy tracts by observing property boundaries.



Base map courtesy of USGS