

About Tunnelville Cliffs

The Conservancy permanently protected 153 acres of Tunnelville Cliffs in May 2005. Among its many features are east-facing Cambrian sandstone cliffs with seepages at the base, the Kickapoo River and an associated wetland, a small goat prairie, wooded ridges, and a hilltop with a fantastic overlook of the valley.

In December 2009, 1,118 acres of additional land, on the Kickapoo River north of Viola, were donated to the Conservancy. The site includes springs, creeks, over 9,000 feet of frontage on the Kickapoo River, forests, cliffs, prairie, sedge meadow, and open grasslands and adjoins the initial 153-acre land purchase from 2005. The combined total acreage equals 1,271 acres.

The Conservancy land management team is improving the habitat throughout the site through prescribed burns, invasive species control, and other activities throughout the year. Volunteers are invited to join in land management efforts and can sign up at the Conservancy website.

Public Access

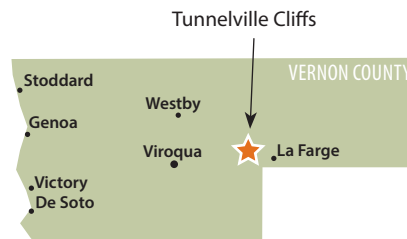
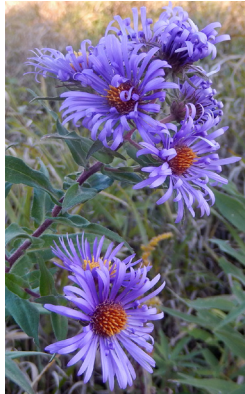
Dogs and bikes are NOT allowed on this property. Visitors must follow our **Recreational Use Policy** as well as all federal and state laws and local ordinances. Use either link to see the policy: mississippivalleyconservancy.org/resources/policies



Please respect landowners near Conservancy tracts by observing property boundaries.

Some plants and animals seen here

- Common milkweed
- Evening primrose
- False Solomon's seal
- Jack-in-the-pulpit
- Purple aster
- Blue-winged warbler
- Cerulean warbler
- Henslow's sparrow (state threatened)
- Least flycatcher
- Sedge wren
- Eastern milk snake



1309 Norplex Drive, Suite 9
La Crosse, WI 54601
608-784-3606
www.mississippivalleyconservancy.org

2025-0225

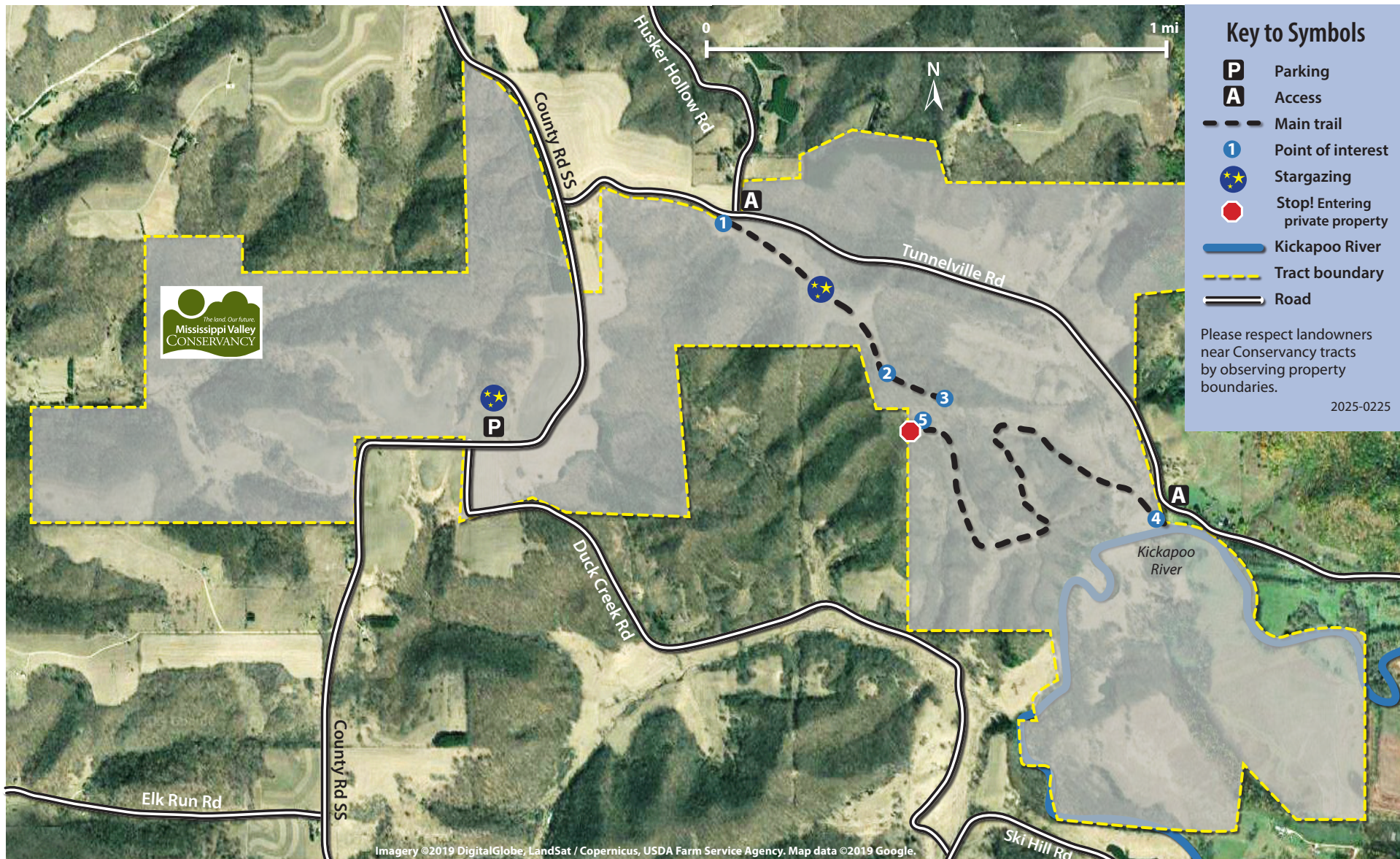


TRAIL MAP

Tunnelville Cliffs

E11639 Tunnelville Rd, La Farge, Wisconsin





Hiking Tunnelville Cliffs (Eastern access: E11639 Tunnelville Road, La Farge, WI)

Two trails end near each other but at different altitudes; they do not connect.

How to get to the trail access points from La Crosse:

1 Northern access: Take 14/61 east to Westby. In Westby turn left onto Hwy 27 for .5 miles, then right onto County Road P. Follow P until you reach County Road D. Turn right onto D and follow it until you reach Hwy 82. Turn right and take the first left, onto Husker Hollow Rd. Follow it to Tunnelville Rd and park along the road. Do not block gate.

4 Eastern access: See above. At Husker Hollow Rd, turn left onto Tunnelville Rd and go 3 miles. Park along the road.

North Entrance Hike (1.6 mi round trip): Start at gate **1** and hike through a relatively flat grassland to **2**, where you'll enter a small wooded area before emerging onto a goat prairie **3** with beautiful views of the surrounding valley.

East Entrance Hike (2.5 mi round trip): **May be inaccessible in wet weather.** Cross Kickapoo River tributary **4** and follow a wide mowed path that rises 200 feet, traversing open valleys with beautiful views. At **5** a gate and a fence indicate private property. Please retrace your steps.